

五大明星城
The City Renowned for
Five Characteristics

工业智造
Intelligent Manufacturing

科教创新
Science and Education Innovation

文旅休闲
Culture, Tourism and Leisure

宜居美丽
Livable and Amazing Environment

和谐幸福
Harmony and Happy Life

国际化智造名城 长三角中轴枢纽

An International Star City of Smart Manufacturing
A Central Hub in the Yangtze River Delta Region

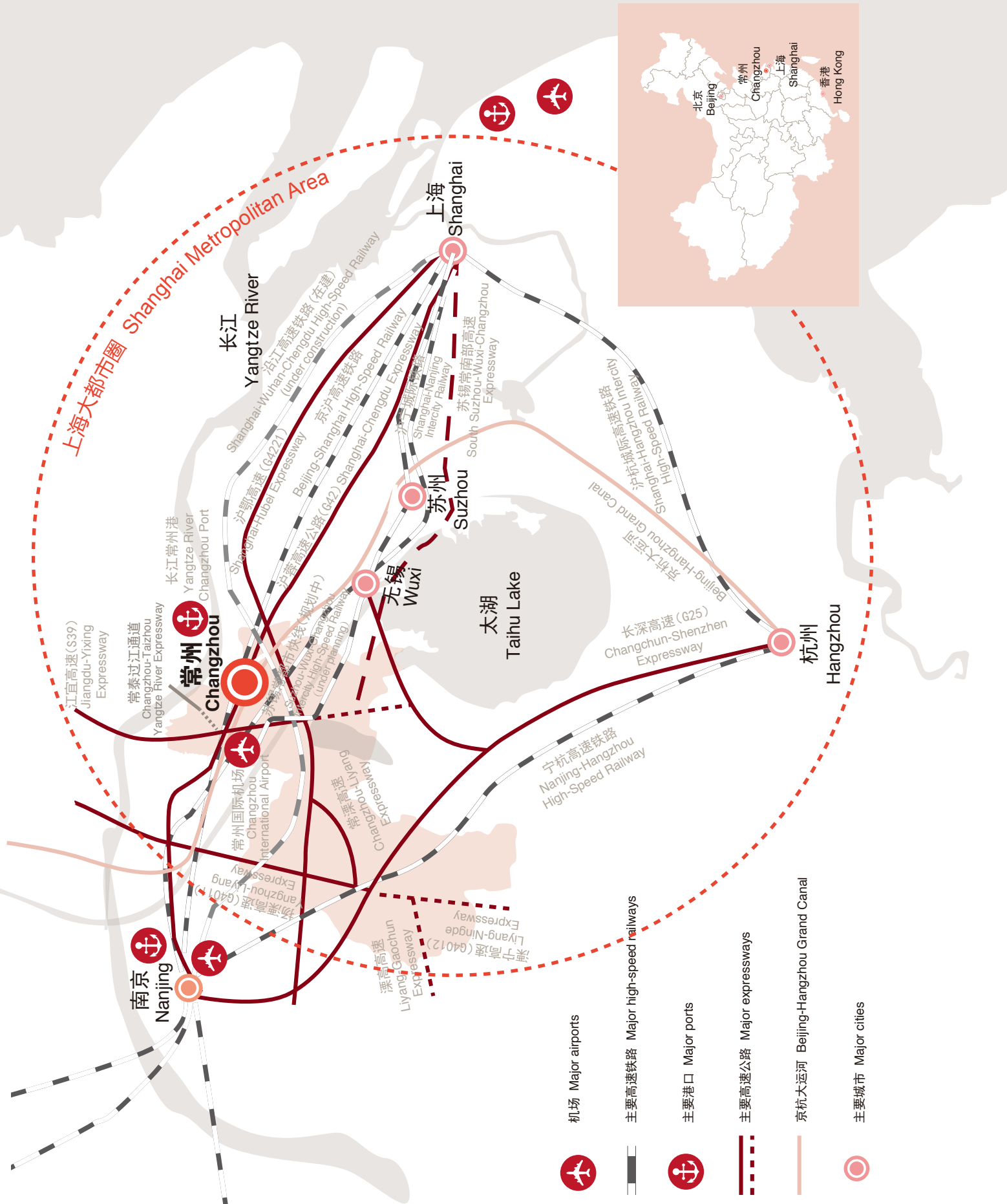


智造常州

2021 选择常州

Intelligent Manufacturing of Changzhou
Choosing Changzhou





目录 Table of Contents

摘要

At a Glance

城市概览

City Overview

常州经济
国际化智造名城
长三角中轴枢纽

Changzhou Economy
An International Star City of Smart Manufacturing
A Central Hub in the Yangtze River Delta Region

投资环境

Investment Climate

外商投资现状
投资平台
人力资源和研发力量
基础设施及配套供应
政府服务

Foreign Investment in Changzhou
Investment Platforms
Human Resource and R&D Capability
Infrastructure and Supporting Facilities
Government Service

人居环境

Quality of Life

联系方式

Contacts

摘要

投资常州 — 请关注这组数据

At a Glance

Investing in Changzhou – Learning these facts and figures



“2020中国地级市全面小康指数排行榜”第**11**位
 Ranked **11th** in “2020 China’s Prefecture-level Cities Overall well-off Index List”

“2020国家创新型城市排行榜”第**16**位
 Ranked **16th** in “the National Innovative City List”

中国先进制造业城市第**17**位
 Ranked **17th** in “the Most Advanced Manufacturing City in China”



2020年GDP总额为人民币**7805.3亿元**，按可比价计算同比增长**4.5%**
 Total GDP of Changzhou in 2019 was **RMB 780.53 billion**, an increase of **4.5%** compared to the prior year



境内外上市公司总数达**75家**，新三板挂牌企业达**102家**
 There are **75** listed companies (including domestic and overseas) and **102** companies listed on New OTC Market



截至2020年底，共有**68家**世界500强企业在我市投资了**117个**项目
 As of the end of 2019, there were **68** Fortune 500 companies having invested in **117** projects in Changzhou



科技进步贡献率预计达**65.8%**，每万人口发明专利拥有量达**40.19件**
 Contribution rate of scientific and technological progress to economic growth of Changzhou is **65.8%**. Changzhou’s number of invention patents per ten thousand people is **40.19**



智能制造装备产业集群入选首批国家战略性新兴产业集群；2020年4月，经国务院批复同意设立中国（常州）跨境电子商务综合试验区
 The industrial cluster of **intelligent manufacturing equipment** was selected into the first batch of national strategic emerging industrial clusters. In April, 2020, China (Changzhou) Cross-border E-commerce Comprehensive Pilot Zone was established with the approval of the State Council



区位优势显著，位于长三角经济圈中心地带，紧邻上海，**1小时**内高铁直达；《上海市城市总体规划（2017—2035年）》将常州纳入协同发展长三角城市群
 In the center of Yangtze River Delta economic zone, Changzhou enjoys close proximity to Shanghai, and is within **one hour** of Shanghai by high-speed rail. Changzhou belongs to the Yangtze River Delta urban agglomerations in the Shanghai Master Plan 2017-2035

城市概览

City Overview



常州经济

Changzhou Economy

国际化智造名城

An International Star City of Smart Manufacturing

长三角中轴枢纽

A Central Hub in the Yangtze River Delta Region

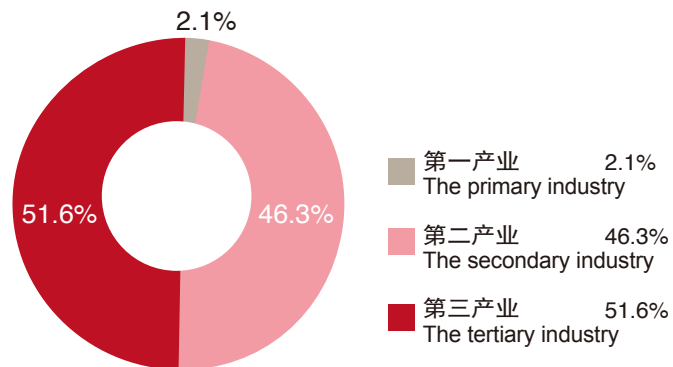
常州经济

Changzhou Economy



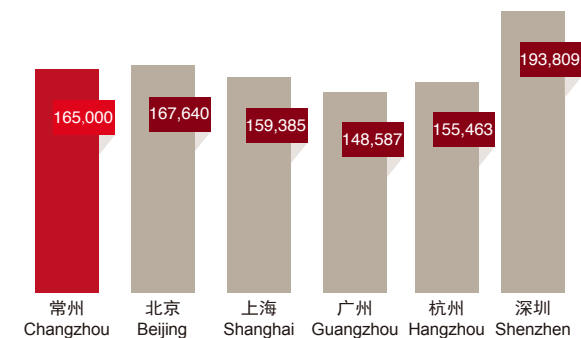
经济规模 Size of the economy

2020年常州GDP产业构成
2020 Changzhou GDP by industry



- 2020年常州GDP总额7805.3亿元，同比增长4.5%
- 第二产业以装备制造业为主
- 常州服务业发展迅速，正打造十大服务业：金融服务业、现代物流业、科技服务业、软件和信息服务业、商务服务业、旅游休闲业、文化创意业、电子商务业、健康服务业及养老服务业
- The total 2020 GDP of Changzhou was RMB 780.53 billion representing growth of 4.5% compared to the previous year
- Secondary industry primarily consists of equipment manufacturing
- Service industry is growing rapidly and Changzhou is developing ten service industry sectors including financial service, logistics, science and technology service, software and IT service, business professional service, tourism and leisure, cultural and creativity, e-commerce, healthcare and elderly care service

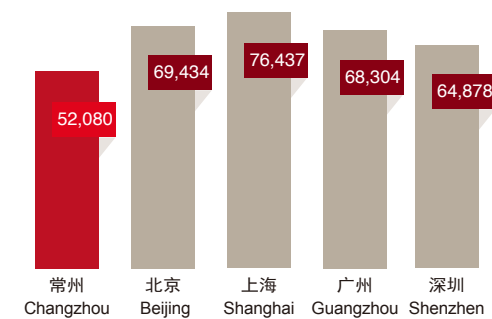
2020年上半年常州人均GDP与其他城市比较(人民币:元)
Comparison of GDP per capita for first half of 2019 (RMB)



- 2020年常州人均GDP为16.5万元，约合2.6万美元
- GDP per capita of Changzhou in 2020 was RMB 165,000 (USD 26,000 equivalent)

消费市场容量 Changzhou consumer market

2020年上半年城镇居民人均年可支配收入比较(人民币:元)
Comparison of disposable income per capita for first half of 2020 (RMB)



- 2020年常州社会消费品零售总额2421.4亿元，约合375亿美元，同比增长0.8%
- 2020年常州城镇居民人均年可支配收入为52080元，约合8063美元
- Total retail sales of consumer goods in 2020 was RMB 242.14 billion (USD 37.5 billion equivalent) and grew by 0.8%
- Disposable income per capita of urban residents of Changzhou was RMB 58,345 in 2020, equivalent to USD 8,458

国际化智造名城

An International Star City of Smart Manufacturing



培育2个2000亿元集群

Cultivate two industrial clusters of 200 billion yuan

以数控机床、机器人、农业和工程机械、高档纺机、环保装备、基础零部件为代表的高端装备和绿色精品钢 including high-end equipment, which is representing by CNC machine tools, robots, agricultural and engineering machinery, high-grade spinning machines, environmental protection equipment, basic parts and components, and green high-quality steel

高端装备

江苏金昇实业股份有限公司
常发集团
柳州常州挖掘机有限公司
江苏恒立液压股份有限公司
国机重工集团常州有限公司
江苏国茂减速机有限公司
常州宝菱重工机械有限公司
格力博(江苏)股份有限公司
安川(中国)机器人有限公司
卡尔迈耶(中国)有限公司
常州同和纺织机械制造有限公司
五洋纺机有限公司
立达(常州)纺织仪器有限公司
光大环保能源(常州)有限公司
维尔利环保集团
布勒(常州)机械有限公司
江苏兴锻智能装备科技有限公司
遨博(江苏)机器人有限公司
征图新视(江苏)科技股份有限公司

绿色精品钢

中天钢铁集团有限公司
常州东方特钢有限公司

高端装备集群着重发展精密减速机、高档伺服系统、高精度液压传动系统、智能数控系统、在线远程诊断等关键共性技术

绿色精品钢集群着重发展高性能基础件用特殊棒材线、高品质锻轧材等

培育5个1000亿元集群

Cultivate five industrial clusters of 100 billion yuan

汽车及核心零部件(含新能源汽车)、新一代信息技术、以石墨烯和碳纤维材料为代表的新材料,以太阳能光伏为代表的新能源、新型电力装备

Including automobile and core parts (includes new energy vehicles), new IT, new materials represented by graphene and carbon fiber materials, new energy represented by solar photovoltaic, and new electric power equipment

汽车及核心零部件 (含新能源汽车)

东风日产常州工厂
北汽新能源常州有限公司
重庆理想智造汽车有限公司常州分公司
常州星宇车灯股份有限公司
江苏时代新能源科技有限公司
中航锂电科技有限公司
坤泰车辆系统(常州)有限公司

汽车及核心零部件(含新能源汽车)集群着重发展动力电池、驱动电机、先进变速器、智能控制等核心技术,形成从关键零部件到整车的完整产业体系

新一代信息技术

瑞声科技有限公司
江苏精研科技股份有限公司
光宝科技(常州)有限公司
常州银河电器有限公司
信维通信(江苏)有限公司
常州澳弘电子股份有限公司
江苏宏微科技股份有限公司
常州纵慧芯光半导体科技有限公司
星星充电
航天云网数据研究院(江苏)有限公司
苏文电能科技股份有限公司
常州天正工业发展股份有限公司

新一代信息技术集群着重发展集成电路、信息通讯设备及工业软件和5G基站建设、大数据中心、人工智能、工业互联网等新基建领域

新材料

江南石墨烯研究院
中简科技发展有限公司
常州碳元科技发展有限公司
常州市宏发纵横新材料股份有限公司
常州强力电子新材料科技股份有限公司
常州华日升反光材料有限公司
江苏裕兴薄膜科技股份有限公司

新材料集群着重发展特种石墨材料、石墨烯、高性能碳纤维以及新型功能材料、新型电子材料

新能源

常州天合光能有限公司
东方日升新能源股份有限公司
常州亿晶光电科技有限公司
常州顺风发电设备有限公司
常州亚玛顿股份有限公司
江苏万帮德和新能源科技有限公司

新能源集群着重发展新一代光伏核心技术、风电、光热设备制造和系统集成

新型电力装备

江苏上上电缆集团有限公司
常州东芝变压器有限公司
常州西电变压器有限公司
江苏华朋集团有限公司
常州博瑞电力自动化设备有限公司
江苏安靠智能输电工程科技股份有限公司

新型电力装备集群着重发展新能源并网及控制设备、智能输电设备、智能配用电设备和智能调度通信系统等

培育3个500亿元集群

Cultivate three industrial clusters of 50 billion yuan

轨道交通、生物医药及新型医疗器械、新型纺织服装为代表 Including rail transportation, biomedical and new medical equipment and new textile and clothing

轨道交通

中车戚墅堰机车有限公司
中车戚墅堰机车车辆工艺研究所
新誉集团
今创集团

轨道交通集群着重发展车体、转向架等关键零部件制造及整车制造

生物医药及新型医疗器械

常州合全药业有限公司
常州四药制药有限公司
常州千红生化制药股份有限公司
联影(常州)医疗科技有限公司
创生医疗器械(中国)有限公司
(被美国史赛克收购)
康辉控股(中国)公司
(被美国美敦力收购)

生物医药及新型医疗器械集群着重发展新型疫苗、蛋白质药物、诊断试剂等生物制药以及高性能医学影像设备、临床检验设备、先进医疗设备、医用机器人以及数字化微创无创诊疗设备和医用材料等

新型纺织服装

常州华利达服装集团有限公司
晨风集团股份有限公司
江苏普灵仕集团有限公司
黑牡丹(集团)股份有限公司
常州旭荣针织印染有限公司
常州东奥服装有限公司

新型纺织服装集群着重发展新型纺织材料研发应用、纺织品后整理水平、设计能力以及自主品牌建设

High-end Equipment

High-end equipment cluster is based on Jiangsu Jinsheng Industry Co., Ltd. Changfa Group Liugong Changzhou Excavator Co., Ltd. Jiangsu Hengli Hydraulic Co., Ltd. Sinomach Changlin Company Limited Jiangsu Guomao Reducer Co., Ltd. Changzhou Baoling Heavy & Industrial Machinery Co., Ltd. Globe Group Yaskawa (China) Robot Co., Ltd. Karl Mayer (China) Co., Ltd. Changzhou Tonghe Textile Machinery Manufacture Co., Ltd. Wuyang Textile Machinery Co., Ltd. Rieker (China) Textile Instruments Co., Ltd. Everbright Environment Protection Co., Ltd. Welle Group Buller (Changzhou) Machinery Co., Ltd. Jiangsu CPTEK Servo Technology Co., Ltd. Aubo (Jiangsu) Robot Co., Ltd. Focusight (Jiangsu) Technology Co., Ltd.

High-end equipment cluster is focusing on developing high precision gear reducer, high-grade servo system, high precision hydraulic transmission system, intelligent CNC system, on-line remote diagnosis and other key generic technology

Green High-quality Steel

Zenith Steel Group Company Changzhou Dongfang Special Steel Co., Ltd.

Green high-quality steel cluster is focusing on the development of special bar wire for high performance base parts and high quality forging and rolling materials

Automobile and core parts (includes new energy vehicles)

Dongfeng Nissan Changzhou Factory BAIC New Energy Automobile Changzhou Co., Ltd. Chongqing Lixiang Automobile Co., Ltd. Changzhou Branch Changzhou Xingyu Automotive Lighting Systems Co., Ltd. Jiangsu Times New Energy Technology Co., Ltd. China Lithium Battery Technology Co., Ltd. Kuntye Vehicle System (Changzhou) Co., Ltd.

Automobile and core parts (includes new energy vehicles) cluster is focusing on the development of power battery, drive motor, advanced transmission, intelligent control and other core technologies, forming a complete industrial system from key components to vehicles

New IT

New IT cluster is based on AAC Technologies Co., Ltd. Jiangsu Gian Technology Co., Ltd. Lite-on Technology (Changzhou) Co., Ltd. Changzhou Galaxy Century Microelectronics Co., Ltd. Sunway Communication (Jiangsu) Co., Ltd. Changzhou Aohong Electronics Co., Ltd. MacMic Science & Technology Co., Ltd. Verilite Co., Ltd. Star Charge CASI Cloud Data Institute (Jiangsu) Co., Ltd. Suwen Electric Energy Co., Ltd. Changzhou Tianzheng Industrial Development Co., Ltd.

New IT cluster is focusing on the development of integrated circuits, information and communication equipment and industrial software, and new infrastructure such as 5G base stations, big data centers, artificial intelligence and the industrial Internet

New Material

Jiangnan Graphene Research Institute Sinofibers Technology Co., Ltd. Changzhou Tanyuan Technology Development Co., Ltd. PGTEX China Co., Ltd. Changzhou Tronly New Electronic Materials Co., Ltd. Changzhou Hua R Sheng Reflective Material Co., Ltd. Jiangsu Yuxing Film Technology Co., Ltd.

New material cluster is focusing on the development of special graphite materials, graphene, high-performance carbon fiber and new functional materials and new electronic materials

New Energy

Trina Solar Energy Co., Ltd. Risen Energy Co., Ltd. Changzhou EGing Photovoltaic Technology Co., Ltd. Changzhou Sinfon Electric Power Equipment Co., Ltd. Changzhou Almaden Co., Ltd. Jiangsu Wanbangdehe New Energy Technology Co., Ltd.

New energy cluster is focusing on the development of new generation photovoltaic core technology, wind power, solar and thermal equipment manufacturing and system integration

New Electric Power Equipment

Jiangsu Shangshang Cable Group Co., Ltd. Changzhou Toshiba Transformer Co., Ltd. Changzhou XD Transformer Co., Ltd. Jiangsu Huapeng Group Co., Ltd. Changzhou NR Electric Power Automation Equipment Co., Ltd. Jiangsu Ankura Co., Ltd.

New electric power equipment cluster is focusing on the development of new energy grid-connected and control equipment, intelligent power transmission and transformation equipment, intelligent power distribution equipment and intelligent dispatch communication system

Rail Transportation

CSR Qishuyan Co., Ltd. CSR Qishuyan Institute Co., Ltd. New United Group KTK Group Co., Ltd.

Rail transportation cluster is focusing on the development of car body, bogie and other key parts manufacturing and vehicle manufacturing

Biomedical and New Medical Equipment

Changzhou He Quan Pharmaceutical Co., Ltd. Changzhou Siyao Pharmaceutical Co., Ltd. Changzhou Qianhong Bio-pharma Co., Ltd. United Imaging (Changzhou) Healthcare Technology Co., Ltd. Trauson Medical Instrument (China) Co., Ltd. (acquired by Stryker Corporation) Kanghui Holding (China) Inc. (acquired by Medtronic Inc.)

Biomedical and new medical equipment cluster is focusing on the development of new vaccines, protein drugs, diagnostic reagents and other bio-pharmaceuticals, as well as high-performance medical imaging equipment, clinical testing equipment, advanced medical equipment, medical robots, digital minimally invasive non-invasive diagnosis and treatment equipment and medical materials

New Textile and Clothing

Changzhou Hualida Garment Group Co. Ltd. Chenfeng Group Co., Ltd. Jiangsu Prince Group Co., Ltd. Black Peony Group Co., Ltd. Changzhou Xu Rong Knitting and Dyeing Co., Ltd. Changzhou Dong Ao Garment Co. Ltd.

New textile and clothing cluster is focusing on the development of new textile materials research and development application, textile finishing level, design capacity and independent brand construction

长三角中轴枢纽

A Central Hub in the Yangtze River Delta Region



常州距离南京约110公里
Changzhou to Nanjing: 110KM

禄口机场 (4F) 50多家中外航空公司连接115个国内外航点	Lukou International Airport (4F) Over 50 domestic and international airlines serve 115 domestic and international destinations
长江南京港 辐射80多个国家和地区近200个港口	Yangtze River Port of Nanjing Connecting with nearly 200 ports in over 80 countries

常州城市名片 Changzhou profile

面积: 4372平方公里 (市区面积2838平方公里)	Area: 4,372 KM ² (urban area 2,838 KM ²)
行政区域: 下辖溧阳县级市和金坛、武进、新北、天宁、钟楼五个行政区	Districts: County-level city: Liyang Districts: Jintan, Wujin, Xinbei, Tianning and Zhonglou
人口: 常住人口约473.6万	Population: About 4.736 million
气候: 亚热带湿润季风气候, 四季分明, 气候温润	Climate: Subtropical humid and warm monsoon climate with four distinct seasons
地势: 平原为主	Topography: Plains
友好城市: 常州与全世界六大洲、25个国家缔结了53个国际友好城市, 主要包括: 美国: 罗克福德市、布法罗市 德国: 埃森市、明登市 日本: 高槻市、所泽市 以色列: 内坦亚市 巴西: 南卡希亚斯市、库里蒂巴市 韩国: 南阳市、春川市 英国: 索利哈尔市 俄罗斯: 托木斯克市、斯塔夫罗波尔市 荷兰: 蒂尔堡市 芬兰: 萨塔昆塔地区等	Sister cities: Changzhou has established a sister city relationship with 53 cities in 25 different countries across 6 continents, including: US: Rockford, Buffalo Germany: Essen, Münden Japan: Takatsuki, Tokorozawa Israel: Netanya Brazil: Caxias do Sul, Curitiba Korea: Namyangju, Chun Cheon UK: Solihull Russia: Tomsk, Stavropol Netherlands: Tilburg Finland: Satakunta

常州本地交通枢纽情况 Changzhou transport connectivity

常州国际机场 (4E)

- 20多条国内航线至北京、广州、成都、深圳等地
- 先后开通香港、澳门、台北、大阪、曼谷、首尔、芽庄、岷港等17条国际(地区)航线
- 2020年常州国际机场年旅客吞吐量226万人次

常州国际机场 (4E)

- Serves more than 20 domestic destinations, including Beijing, Guangzhou, Chengdu, Shenzhen, etc
- Serves 17 international destinations, including Hong Kong, Macau, Taipei, Osaka, Bangkok, Seoul, Nha Trang, Da Nang, etc
- In 2020, the annual passenger throughput of Changzhou international airport is 2.26 million

铁路

- 5条铁路途经常州, 沿江高速铁路在建
- 主要铁路: 京沪高速铁路 (至北京的高铁车程约4.5小时) 沪宁城际铁路 (至上海的高铁车程约1小时)
- 开通常州-宁波舟山港、常州-上海海铁联运专列

Rail connection

- 5 railways passing through Changzhou, Shanghai-Wuhan-Chengdu High-speed Railway under construction
- Main railways: Beijing-Shanghai line (approximately 4.5 hours from Changzhou to Beijing), Shanghai-Nanjing line (approximately 1 hour from Changzhou to Shanghai)
- Changzhou-Ningbo and Changzhou-Shanghai intermodal trains are running

高速公路

- 7条高速公路途经常州, 苏锡常南部高速、常泰过江通道在建
- 主要高速公路: 沪蓉高速 (G42), 沪鄂高速 (G42S) 长深高速 (G25)

Road connection

- 7 expressways passing through Changzhou, South Suzhou-Wuxi-Changzhou Expressway and Changzhou-Taizhou Yangtze River Expressway under construction
- Main expressways: Shanghai-Chengdu Expressway(G42), Shanghai-Hubei Expressway(G42S), Changchun-Shenzhen Expressway(G25)

长江常州港

- 10个万吨级泊位 (包含一个十万吨级泊位)
- 2020年港口货物吞吐量: 5442万吨

Yangtze River Port of Changzhou

- Ten 10,000-ton above deepwater berths (including a 100,000-ton above deepwater berth)
- Cargo handled in 2020: 54.42 million tons

河运

- 京杭大运河穿境而过, 自西北而东南联通整座城市

River connection

- Beijing-Hangzhou Grand Canal passing through Changzhou

常州距离上海约160公里
Changzhou to Shanghai: 160KM

浦东国际机场 (4F) 虹桥国际机场 (4E) 100多家中外航空公司连接297个国内外航点	Pudong International Airport (4F) Hongqiao International Airports (4E) Over 100 domestic and international airlines serve 297 domestic and international destinations
上海港 2020年港口货物吞吐量: 4350万标准箱	Shanghai port Cargo handled in 2020: 43.5 million TEU
中国(上海)自由贸易试验区 ("自贸区") 为常州企业更好对接自贸区, 常州已在自贸区设立“服务窗口”	China (Shanghai) Pilot Free Trade Zone ("PFTZ") To better link business in Changzhou with PFTZ, a "service window" has been set up in PFTZ



投资环境

Investment Climate



外商投资现状	Foreign Investment in Changzhou
投资平台	Investment Platforms
人力资源和研发力量	Human Resource and R&D Capability
基础设施及配套供应	Infrastructure and Supporting Facilities
政府服务	Government Service

目前已有68家世界500强在常州投资了117个项目
68 Fortune 500 Enterprises have invested 117 projects in Changzhou



常州现有省级跨国公司地区总部和功能性机构23家

There are 23 regional headquarters and functional agencies of provincial multinational corporations located in Changzhou



外商投资现状

已有来自110个国家和地区的投资者来常投资，实有外商投资法人企业3000多家，2020年外商投资企业新增协议外资55.87亿美元

Foreign Investment in Changzhou

Investors from 110 different countries and regions have established 3,000 FIEs in Changzhou. The new investment totaled at USD 5.587 billion in 2020

外商投资现状

- 截至2020年底，共有68家世界500强企业在我市投资了117个项目
- 常州现有省级跨国公司地区总部和功能性机构23家
- 2020年外商投资企业新增协议外资55.87亿美元，2020年新增外商投资项目346个，新增总投资额超亿美元外商投资企业21家

Foreign investment in Changzhou

- By the end of 2020, there were 68 Fortune 500 companies having invested in 117 projects in Changzhou
- There are 23 regional headquarters and functional agencies of provincial multinational corporations located in Changzhou
- In 2020, new investment in Changzhou totaled at USD 5.587 billion. There were 346 new foreign-invested projects. 21 new FIEs have a total investment of more than USD 100 million each



企业感言

What businesses say

“常州处于长三角的中心位置，区域内具备高速公路、高速铁路、机场、港口四大交通枢纽；集聚了超过150家日资企业，拥有良好的日企氛围；常州拥有各级职业高校，形成了完善的人才梯队培育机制，使得各类型人才聚集于此，为制造业企业提供了强有力的保障。”

——住友电工运泰克机电线(常州)有限公司总经理：渡边正秀

“Changzhou is located in the center of Yangtze river delta, with four major transportation hubs including expressway, high-speed railway, airport and port. It provides a favorable atmosphere for foreign enterprises here. There are all levels of vocational colleges and universities in Changzhou, which formed a perfect talent training mechanism and attracted various types of talents gathering here, providing a strong support for manufacturing enterprises.”

- Masahide Watanabe, Managing Director, Sumitomo Electric Wintec Magnet Wire (Changzhou) Co., Ltd.



常州市有着全国一流的智能制造环境，从配套供应商到产品推广，从高端人才引进到国家级平台构建，为投资者提供很便捷的服务和良好的投资环境。”

——安川(中国)机器人有限公司总经理兼董事：埴谷和宏

“With one of the best intelligent manufacturing environment in China, Changzhou provides convenient service and good investment environment for investor, such as supporting supplier, promotion of product, introduction of high-end talents and construction of national platform.”

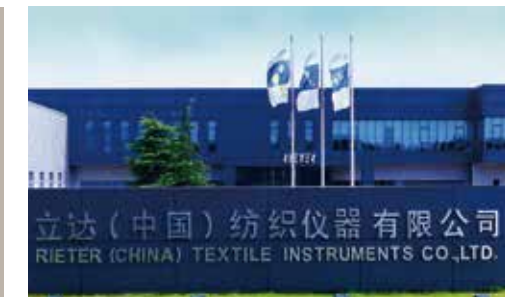
- Haniya Kazuhiro, Yaskawa (China) Robotics Co., Ltd.

“常州位于南京和上海之间，交通便利，拥有非常广泛的人力资源基础。并且我们公司得到了常州市政府的大力支持。”

——立达集团中国区总经理：胡本石

“Changzhou lies between Nanjing and Shanghai, with convenient transportation and a very broad human resource base. And our company has received strong support from the Changzhou municipal government.”

- Dr. Hubensteiner, Managing Director, Rieter (China) Textile Instruments Co., Ltd.



“在常州，政府有着更加快速决策和充满活力的团队。”

——博世力士乐(常州)有限公司总经理：沈同茂

“We are in an area that is very rapidly developing that decisions are being made much quicker, much more dynamic”

- Thomas Starke, Managing Director, Bosch Rexroth (Changzhou) Co., Ltd.

投资平台

常州省级以上开发区、综合保税区和国际合作园区

Investment Platforms

Provincial & state level development zones, free trade zones and international cooperation parks in Changzhou

江苏常州滨江经济开发区
Jiangsu Changzhou Binjiang Economic Development Zone(CZBJ)

新材料、装备制造及港口物流
New materials, equipment manufacturing and port logistics

江苏常州钟楼经济开发区
Jiangsu Changzhou Zhonglou Economic Development Zone

先进装备制造、新一代信息技术及新材料产业
Advanced equipment manufacturing, new IT and new materials industry

江苏金坛经济开发区
Jiangsu Jintan Economic Development Zone

江苏省金坛华罗庚高新技术开发区
Jiangsu Jintan Hualuogeng High-tech Industrial Development Zone

高端智能装备、光伏产业园、信息通讯产业、生物技术和新医药、新能源汽车及零部件、新材料产业
High-End Intelligent Equipment Industry, PV Industrial park, Information&Communication Industry, Biotechnology and new medicine Industry, New-Energy Vehicle and Auto Parts Industry, New Material Industry

新一代移动通信、新能源汽车“两新”特色产业
New generation of mobile communication and new energy vehicles industries

江苏溧阳经济开发区
Jiangsu Liyang Economic Development Zone

高端装备及通用航空产业、健康产业、电子信息产业、绿色能源产业、软件产业以及研发机构
High-end equipment and general aviation, healthcare, electronic information, green energy, software and R&D institutes

江苏中关村高新技术产业园区
Jiangsu Province Zhongguancun Hi-tech District

智能电网产业，高端装备产业，动力电池产业
Smart power grids industry, high-end equipment industry, power battery industry

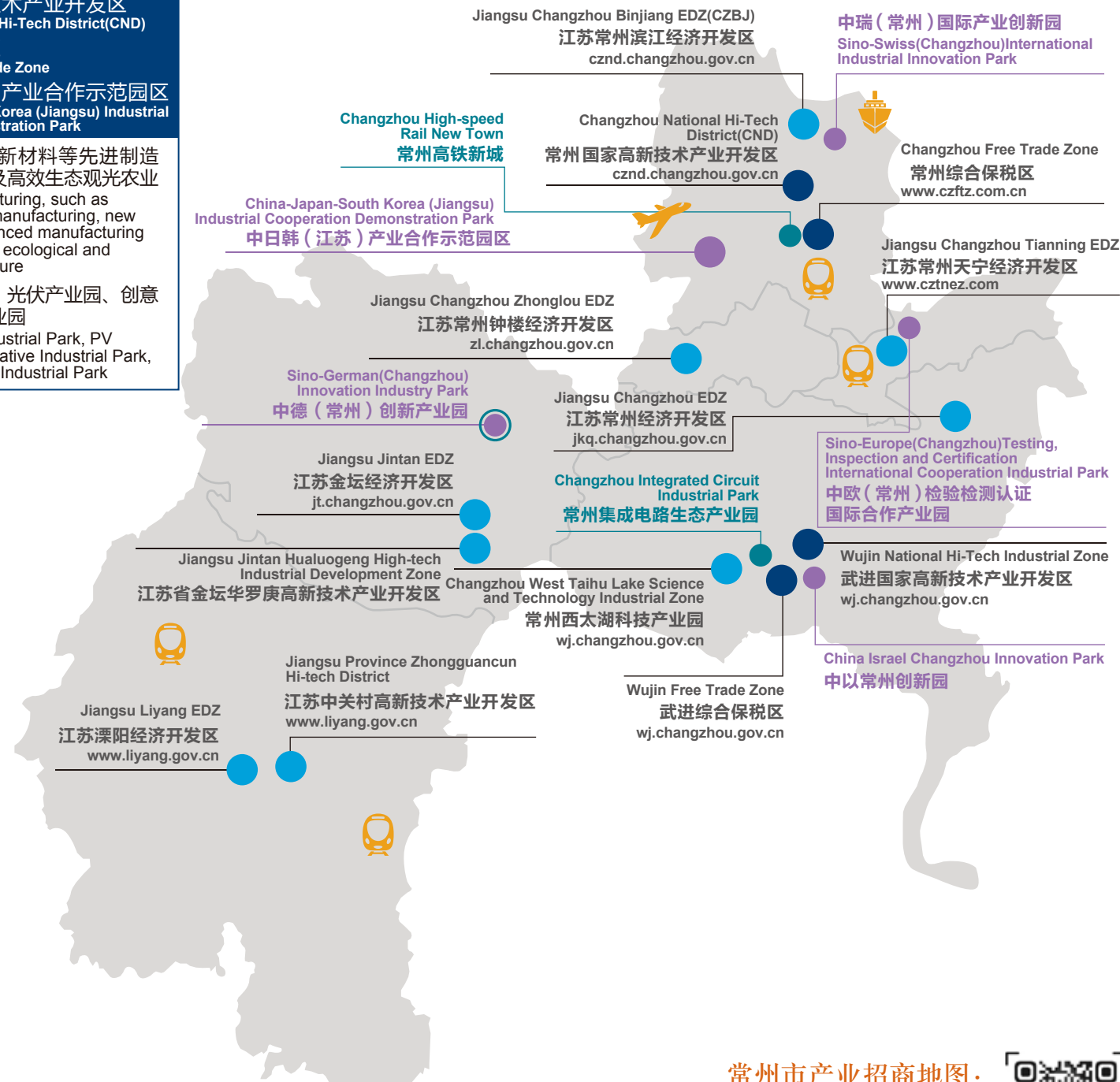
常州国家高新技术产业开发区
Changzhou National Hi-Tech District(CND)

常州综合保税区
Changzhou Free Trade Zone

中日韩(江苏)产业合作示范园区
China-Japan-South Korea (Jiangsu) Industrial Cooperation Demonstration Park

动力装备制造、新材料等先进制造业、现代服务业及高效生态观光农业
Advanced manufacturing, such as power equipment manufacturing, new materials etc. advanced manufacturing and High-efficiency ecological and sightseeing agriculture

生命健康产业园、光伏产业园、创意产业园和空港产业园
Life and Health Industrial Park, PV Industrial Park, Creative Industrial Park, Changzhou Airport Industrial Park



江苏常州天宁经济开发区
Jiangsu Changzhou Tianning Economic Development Zone

工业互联网、智能驾驶、生命健康、新一代信息技术、检验检测、智能制造和机器人
Industrial internet, intelligent driving, life and health, New IT, inspection and testing, intelligent manufacturing and Robots

江苏常州经济开发区
Jiangsu Changzhou Economic Development Zone

先进轨道交通装备、新型特种材料、智能电力装备绿色电机、绿色家居、绿色能源科技服务、现代物流、文化创意
Advanced railway transportation equipment, New & special material, smart grid equipment Green motors, green living, green energy Technology service, Modern logistics, culture creativity

轨道交通产业园、新材料产业园以及机电产业园
Railway Transportation Industrial Park, New Material Industrial Park and Mechanical & Electrical Industrial Park

武进国家高新技术产业开发区
Wujin National Hi-Tech Industrial Zone

武进综合保税区
Wujin Free Trade Zone

高端装备、节能环保、电子信息、轨道交通、机器人、智能汽车
Intelligent Equipment, energy saving & environment protection, electronic Information, railway transportation, robots & system integration, intelligent EV

机器人及智能装备产业园、电子信息产业园、节能环保产业园、智能汽车产业园
Robots & System Integration & Intelligent Equipment Industrial Park, Electronic Information Industrial Park, Energy Saving & Environment Protection Industrial Park, Intelligent EV Industrial Park

常州西太湖科技产业园
Changzhou West Taihu Lake Science and Technology Industrial Zone

石墨烯产业、医疗健康产业、文化旅游产业、互联网产业
Graphene Industry, Healthcare Industry, Culture&Tourism Industry and Internet Industry

苏澳合作园区
Jiangsu-Macau Cooperation Zone

常州市产业招商地图:
Infographic Guide to Investment in Changzhou:
www.czcycdt.cn/czsz/



人力资源和研发力量

常州本地院校为长三角地区提供充沛的人力资源

Human Resources and R&D Capability

Local education institutions provide the Yangtze River Delta with sufficient human resources

常州教育资源

学校类型	名称	毕业生情况	校企合作
全日制普通本科院校	常州大学*	2020年，专科以上毕业生约3.64万余人	为满足企业用工需求，常州本地院校与企业联合开办“定制班”，培养专需技术工人。例如：“博世力士乐班”、“久保田班”、“常林班”、“玉柴班”、“卡特彼勒班”、“卡尔迈耶班”、“蒂森克虏伯班”等，助推常州十大先进制造业产业集群发展
	江苏理工学院 常州工学院 河海大学常州校区 南京航空航天大学天目湖校区		
中高级职业教育院校	常州信息职业技术学院* 常州纺织服装职业技术学院* 常州工业职业技术学院* 常州工程职业技术学院* 常州机电职业技术学院* 江苏城乡建设职业学院 建东职业技术学院 常州旅游商贸高等职业技术学校 常州铁道高等职业技术学校 常州刘国钧高等职业技术学校 常州卫生高等职业技术学校 常州艺术高等职业学校 江苏省常州技师学院 武进技师学院 常州交通技师学院 常州冶金技师学院 常州航空技工学校 常州工贸高级技工学校 常州科技经贸技工学校 常州天正技工学校 常州市金坛区技工学校	2020年，全年每万名劳动者中高技能人才数连续七年位居江苏省第一	

注*：入驻常州科教城的高校

Education resources in Changzhou

Institutions	Name	Graduates	Cooperation with business
Full-time universities	Changzhou University* Jiangsu University of Technology Changzhou Institute of Technology Hohai University Changzhou campus Tianmu Lake Campus of Nanjing University of Aeronautics and Astronautics	There were about 36.4 thousand undergraduates and college graduates in 2020	In order to meet local business' needs for skilled workers, some education institutions in Changzhou have launched "tailored courses" with businesses, such as "Bosch Rexroth Class", "Kubota Class", "Changlin Class", "Yuchai Class", "Caterpillar Class", "Karl Mayer Class", "ThyssenKrupp Class", etc. Accelerating the development of ten advanced manufacturing industrial clusters of Changzhou
	Vocational education colleges	11293 skilled workers graduated in 2020	
	Changzhou Institute of Information Technology* Changzhou Textile Garment Institute* Changzhou Institute of Industry Technology* Changzhou Institute of Engineering Technology* Changzhou Institute of Mechatronic Technology* Jiangsu Urban and Rural Construction College Jiangdong College Changzhou Technical Institute of Tourism & Commerce Changzhou Higher Vocational Technical College of Railway Changzhou Liu Guojun Vocational Technology College.. Changzhou Health Vocational & Technical School Changzhou Art School of Higher Occupation Jiangsu Changzhou Technician College Wujin Technician College Changzhou Transportation Technician College Changzhou Metallurgy Technician College Changzhou Aviation Technician School Changzhou Industry & Trade Senior Technical School Changzhou Technical College of Technology & Trade Changzhou Tengen Technical School Changzhou Jintan Technician School	From 2014 to 2020, Changzhou's number of highly skilled personnel per 10,000 workers ranked 1st in Jiangsu province for 7 consecutive years	

Note*: Located in Changzhou Science and Education Town

常州劳动力成本分析

- 常州2019年城镇私营单位就业人员平均工资为60529元
- 常州2020年社会保险费企业缴纳比例约为员工基本工资的16%

Analysis of Labour cost in Changzhou

- The average annual salary for private sector employees in Changzhou's urban area was RMB 60,529 in 2019
- Social security contribution borne by employer in Changzhou was 16% of the basic salary in 2020

常州科教城

Changzhou Science and Education Town

目前，园区入驻研发机构 39 家、科技企业 3000 余家，拥有科技人才总数 2.15 万人，拥有在校学生人数 7.8 万人

By 2020, 39 R&D institutes and over 3,000 companies have been established and there are over 21,500 R&D talents and about 78,000 students

作为江苏省 50 个重点项目之一，进驻常州科教城的企业将享受极具竞争力的优惠政策

It is one of the 50 key projects in Jiangsu Province. Enterprises that have a presence in the Changzhou Science and Education Town enjoy competitive preferential policies

融大学、研发机构、企业、孵化器于一体的公共平台、教育和科技研发高地

A highland of public platform, education and R&D, which integrates universities, R&D institutions, enterprises and incubators

“中德创新园区”被国家发改委和欧盟驻华使团授予“中欧城镇化伙伴关系示范区”，江南克拉尼设计院落户常州科教城

“Sino-Germany Innovation Park” was awarded Exemplary EU-China Urban Cooperation Recognition by National Development and Reform Commission and European Commission. Colani Design Institute has been set up in the Science and Education Town



人力资源和研发力量

地方人才激励政策完善，研发活跃

Human Resources and R&D Capability

Changzhou has comprehensive talent policies and it is also active in R&D activities

主要人才政策

政策名称	支持对象	政策概要
“龙城英才计划”顶尖人才引进培育实施计划	顶尖人才（团队）	根据项目情况给予最高1亿元的特别支持
“龙城英才计划”升级版		根据项目情况给予最高800万元的创业资助资金

注：具体政策参考网站zg.changzhou.gov.cn “支持政策” 版块

Major talent policies

Policy	Target talent	Summary of major policies
Longcheng Talent Plan (Implementation Plan for the Introduction and Cultivation of Top Talents)	Top Talents (Team)	Up to RMB 100 million subsidies according to the project
Longcheng Talent Plan (Updated Version)		Up to RMB 8 million subsidies according to the project

Note: Refer to zg.changzhou.gov.cn “Supportive Policies” Section

科研实力

2020年，全社会研发投入占GDP比重3%

新增高新技术企业1141家，累计拥有高新技术企业2497家

高新技术产业产值比重较2015年提高3个百分点

科技进步贡献率预计达65.8%

万人发明专利拥有量达40.19件

R&D capability

In 2020, the city's R&D investment is accounted for 3% of GDP

1141 newly recognized High and New Technology Enterprises (“HNTEs”), and 2497 totally

The output value of high and new technology industries in the industrial output value is increased by 3% over 2015

Contribution rate of scientific and technological progress to economic growth of Changzhou is 65.8%

Changzhou's number of invention patents per ten thousand people is 40.19

基础设施及配套供应

基础设施完善，配套齐全，公用事业成本合理

Infrastructure and Supporting Facilities

Changzhou has well established infrastructure, complete supporting facilities and reasonable utility cost

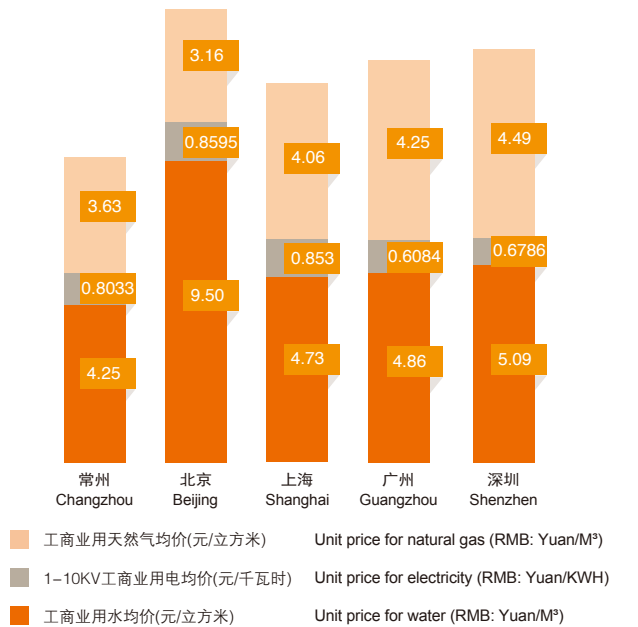
土地、厂房和写字楼供应

- 工业用地都配备基本的公用设施，如水、电、天然气以及连接高速公路的道路
- 高级写字楼一般位于市中心，来往机场、火车站和工业园区交通便捷

Supply of land, plant and office building

- Industrial land are equipped with public facilities, such as water, electricity and natural gas supply as well as roads connected to expressways
- High-end office buildings are generally located in city center with convenient access to airport, railway stations and industrial zones

2020年常州与其他主要城市单位公用事业成本比较
Comparison of utility cost for 2020



公用事业成本（水、电和天然气）

类别	单位价格	
水（元/立方米）		
居民生活用水（阶梯式水价）	3.73	
生产类（一般工商业）	4.21	
生产类（六大行业）	5.43	
特种用水	5.48	
电（元/千瓦时）		
	一般工商业及其他	大工业
1KV以下	0.6715	不适用(N/A)
1-10KV	0.6465	0.6418
20-35KV以下	0.6365	0.6358
35-110KV以下	0.6215	0.6268
110KV		0.6118
220KV及以上		0.5968
气（元/立方米）		
居民用气（小于300立方）	2.72	
工商业用气 浮动价格仅供参考	3.75	
车用天然气 浮动价格仅供参考	4.55	

Utility (water, electricity and natural gas) cost

Items	Unit price	
Tap water (RMB: Yuan/M ³)		
Resident (progressive rate)	3.73	
Manufacturing (general commercial & industrial business)	4.21	
Manufacturing (six high consumption industries)	5.43	
Special industry	5.48	
Electricity (RMB: Yuan/KWH)		
	General commercial & industrial business and others	Large scale industrial business
Below 1KV	0.6715	
1-10 KV	0.6465	0.6418
20-35KV below	0.6365	0.6358
35-110KV below	0.6215	0.6268
110 KV		0.6118
Above 220KV		0.5968
Gas (RMB: (RMB: Yuan/M ³)		
Resident use	2.72	
Commercial & industrial use 浮动价格仅供参考	3.75	
Car-use 浮动价格仅供参考	4.55	

基础设施及配套供应

Infrastructure and Supporting Facilities

物流运输成本

普通货物从常州到以下目的地的参考运输价格及时间		
目的地	参考运费 (元/公斤)	运输时间 (天)
上海	0.4	2-3
北京	0.9	3-4
广州	1.1	4-5

标准集装箱经由上海外高桥或洋山港的参考运输成本及时间

目的地	参考运费 (美元/箱)	运输时间 (天)
香港	50	3
大阪	200	2-3
新加坡	180	8-10
汉堡	1,000	28-32
洛杉矶	1,200	14

配套供应

配套设施	现状描述
城市交通	城市快速交通系统 (“BRT”) 迄今已开通16条BRT线路 首个获得“詹天佑奖”的公共交通项目
地铁	2012年获批4条线路规划 常州地铁1号线已开通, 2号线将于2021年开通
配套服务机构	金融机构 1家政策性银行 6家大型国有商业银行 11家股份制银行 4家城市商业银行 1家外资银行 3家农村商业银行 5家村镇银行 1家金融租赁公司 80家保险公司 专业机构 163家律师事务所 44家会计师事务所
政府扶持基金	政府成立了龙城英才创业投资基金, 由社会创投基金和政府各自出资投资企业 政府在逐步创新财政扶持的方式, 如担保引导基金 (政府参股中小企业, 引导融资)、现代风险保证基金、创投担保资金等

Logistics cost

Estimated transport cost and transport time for domestic shipping		
Destination	Referential unit cost (RMB: Yuan/KG)	Transit time (Days)
Shanghai	0.4	2-3
Beijing	0.9	3-4
Guangzhou	1.1	4-5

Estimated cost and transit time for shipping a standard container Changzhou via Waigaoqiao or Yangshan ports in Shanghai

Destination	Referential unit cost (USD per container)	Transit time (Days)
Hong Kong	50	3
Osaka	200	2-3
Singapore	180	8-10
Hamburg	1,000	28-32
Los Angeles	1,200	14

Supporting facilities

Supporting facilities	Description
Urban	Bus Rapid Transit (“BRT”) 16 lines are in operation The first public transportation project won China civil engineering Jeme Tien Yow Prize
Underground	4 Metro lines have been approved in 2012 Metro line 1 has been in operation. Metro line 2 will be in operation in 2021
Supporting service provider	Financial service provider 1 policy bank 6 large-scale state owned commercial banks 11 joint-stock banks 4 municipal commercial banks 1 foreign-invested bank 3 rural commercial banks 5 village banks 1 financial leasing company 80 insurance companies
Professional service provider	163 law firms 44 accounting firms
Government supporting fund	The Changzhou government launched Longcheng Talents Venture Capital fund to invest in business. The fund has both venture capitalist and the Changzhou government as investors. The Changzhou government is also developing innovative ways of providing financial support, such as setting up guarantee or leading fund (i.e. Government participating corporate finance), modern risk guarantee fund, venture capital guarantee fund, etc.

重点工业行业主要水污染物排放限值

Discharge standard of main water pollutants for key industries

太湖流域一级、二级保护区内的城镇污水处理厂、纺织工业、化学工业、造纸工业、钢铁工业、电镀工业和食品工业的污水处理设施, 执行表1规定的水污染物排放限值。其中, 新建企业从2018年6月1日起执行, 现有企业从2021年1月1日起执行

The wastewater treatment facilities of municipal wastewater treatment plants, textile industry, chemical industry, paper industry, iron and steel industry, electroplating industry and food industry in the first-grade and second-grade protection zones of Taihu lake basin shall be subject to the discharge standard of water pollutants specified in table A. Among the specified industries, newly-established enterprises shall be subject to the discharge standard since June 1, 2018, while existing enterprises shall be subject to the discharge standard since January 1, 2021

太湖流域一、二级保护区内主要水污染物排放限值

单位: mg/L

项目	化学需氧量	氨氮	总氮	总磷
排放限值	40	3 (5)	10 (12)	0.3

注: 1、括号外数值为水温 > 12°C时的控制指标, 括号内数值为水温 ≤ 12°C时控制指标。
2、缫丝、麻纺、无机化学、磷肥、硫酸、造纸工业废水水温 ≤ 12°C时TN仍按10mg/L标准执行。

Discharge standard of main water pollutants in the first-grade and second-grade protection zones of Taihu lake basin

(Unit: mg/L)

Item	chemical oxygen demand	ammonia nitrogen	total nitrogen	total phosphorus
Discharge standard	40	3 (5)	10 (12)	0.3

Note: A. The figures in the brackets are discharge standards applied when the water temperature is higher than 12 °C. The figures outside of the brackets are discharge standards applied when the water temperature is not higher than 12 °C
B. For silk reeling, jute spinning, inorganic chemistry, phosphate fertilizer, sulfuric acid and papermaking industry, the discharge standard of total nitrogen is 10mg/L when the temperature of industrial effluent is not higher than 12 °C

太湖地区其他区域内的纺织工业、化学工业、造纸工业、钢铁工业、电镀工业、食品工业排放的废水执行表2的规定。其中, 新建企业从2018年6月1日起执行, 现有企业从2020年1月1日起执行

Effluent discharged from textile industry, chemical industry, papermaking industry, iron and steel industry, electroplating industry and food industry in other regions of Taihu lake basin shall be subject to the discharge standard of water pollutants specified in table B. Among the specified industries, newly-established enterprises shall be subject to the discharge standard since June 1, 2018, while existing enterprises shall be subject to the discharge standard since January 1, 2020

太湖地区其他区域内重点工业行业主要水污染物排放限值

单位: mg/L

序号	工业行业	化学需氧量	氨氮	总氮	总磷
1	纺织染整工业	60	5	12	0.5
	毛纺工业	60	5	15	0.5
	缫丝工业	40	5	10	0.5
	麻纺工业	60	5	10	0.5
	石油化学工业	50	5	15	0.5
2	合成氨工业	50	10	20	0.5
	合成树脂工业	50	5	15	0.5
	无机化学工业	40	5	10	0.5
	磷肥工业	50	5 (10)	10 (15)	0.5
	硝酸工业	50	8	20	0.5
	硫酸工业	50	5	10	0.5
	油墨工业	50	5	15	0.5
	杂环类农药工业	80	5	15	0.5
	其他化学原料和化学制品制造业	60	5	15	0.5
	制浆企业	80	5	10	0.5
3	制浆与造纸联合生产企业	60	5	10	0.5
	造纸企业	50	5	10	0.5
4	钢铁工业	40	5	15	0.5
5	电镀工业	50	5	15	0.5
6	食品工业	60	5	15	0.5

注: 括号内为磷酸钙和复混肥行业

Discharge standard for main water pollutants of key industries in other regions of Taihu lake basin

(Unit: mg/L)

Item number	Industry category	chemical oxygen demand	ammonia nitrogen	total nitrogen	total phosphorus
1	Textile dyeing and finishing industry	60	5	12	0.5
	Wool spinning industry	60	5	15	0.5
	Silk reeling industry	40	5	10	0.5
	Jute spinning industry	60	5	10	0.5
2	Petrochemical industry	50	5	15	0.5
	Synthetic ammonia industry	50	10	20	0.5
	Synthetic resin industry	50	5	15	0.5
	Inorganic chemical industry	40	5	10	0.5
	Phosphate fertilizer industry	50	5 (10)	10 (15)	0.5
	Nitric acid industry	50	8	20	0.5
	Sulfuric acid industry	50	5	10	0.5
	Printing ink industry	50	5	15	0.5
	Heterocyclic pesticide industry	80	5	15	0.5
	Manufacturing industry of other chemical raw materials and chemical products	60	5	15	0.5
3	Pulping enterprise	80	5	10	0.5
	Joint production enterprise of pulping and papermaking	60	5	10	0.5
4	Iron and steel industry	40	5	15	0.5
	Electroplating industry	50	5	15	0.5
6	Food industry	60	5	15	0.5

Note: Inside the brackets are discharge standards for calcium phosphate and compound fertilizer industries

政府服务

常州政府用较强的服务意识，先进的服务理念和高质量的服务帮助企业在常州成长

Government Service

The Changzhou government uses strong service awareness, an advanced service concept as well as high quality service to support business growth in Changzhou

服务理念

法制、诚信、效率、双赢

Service concept

Legality, Credibility, Efficiency, Win-win

知识产权保护

常州十分重视知识产权保护工作，独创的知识产权保护多部门联合执法工作得到美国强生、通用电气、中国外商投资企业协会优质品牌保护委员会等知名跨国公司和机构的认可

Intellectual property right protection

Changzhou focuses closely on the protection of IP rights. The multi-division action of combined law enforcement on IP rights protection originally created by Changzhou has won high recognition from some famous multi-national companies and organizations, such as Johnson&Johnson, General Electric from the US and QBPC

常州高素质招商团队 Qualified Changzhou investment promotion service team

- 招商人员综合素质强，其中本科、研究生、博士学历的人数占总人数的97%左右
- 招商人员的平均工作年限约5年，其中约75名人员从事招商工作10年以上
- 招商人员掌握的语种包括英语、日语、德语、法语、俄语、韩语、阿拉伯语、意大利语、葡萄牙语
- Changzhou's investment promotion service team are highly qualified. 97% of the team members have undergraduate degrees or above and some have a master's or doctorate qualifications
- The average work experience of the Changzhou investment promotion service team members is 5 years and 75 of them have relevant work experience of more than 10 years
- The Changzhou investment promotion service team members can speak many languages including English, Japanese, German, French, Russian, Korean, Arabic, Italian and Portuguese

常州市国际投资促进中心 Changzhou International Investment Promotion Center

- 为投资项目咨询提供快速高效的服务
- 协调投资者和政府各部门的联络
- Provide services with efficiency for foreign investors
- Coordinate with investors and government authorities

外企协会 Association of FIEs

- 1988年成立外商投资企业协会
- 组织各类文体活动，例如外资企业沙龙、各类体育比赛等
- The association of FIEs was founded in 1988
- A variety of cultural and sport activities have been organized such as FIEs salon, sports activities etc

人居环境

Quality of Life

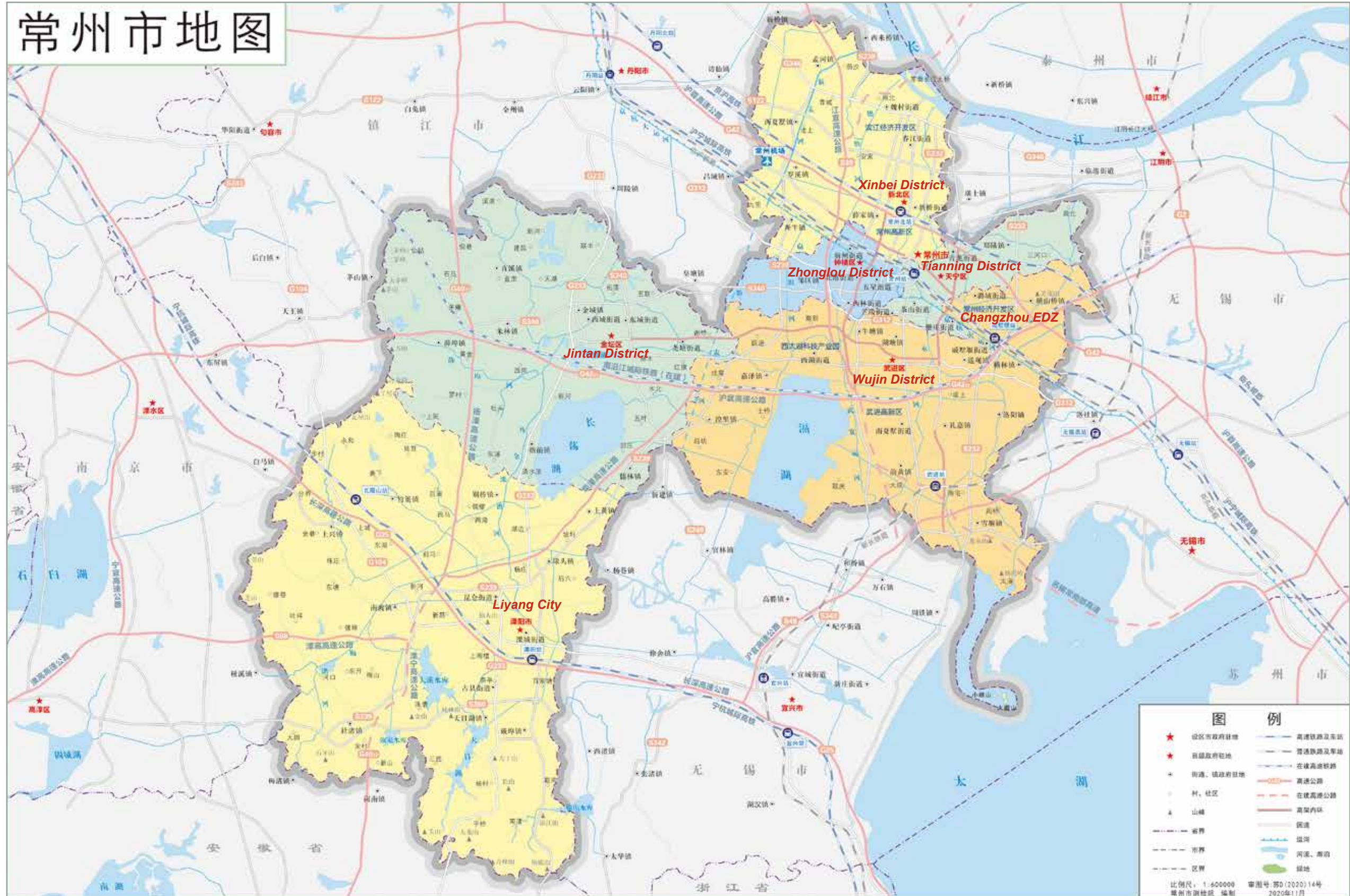


人居环境

Quality of Life



常州市地图



联系方式

常州市国际投资促进中心

常州市国际投资促进中心成立于 2006 年，为来常州投资合作的客商提供全方位专业服务。

电邮: ciip-contact@changzhou.gov.cn

传真: +86-(0)519-88123099

网址: ciip.changzhou.gov.cn

常州市驻上海经贸联络处

地址: 上海市南京西路 1376 号上海商城东峰办公楼 663 室

电话: +86-(0)21-58201545

常州市驻深圳经贸联络处

地址: 深圳市南山区蛇口沿山路 22 号火炬创业大厦 10 楼

电邮: research1@gaogong123.com

电话: +86-(0)755-26981898(717)

传真: +86-(0)755-26981868

常州市驻德国经贸代表处

地址: 德国杜塞尔多夫市

电邮: ciip-europeanoffice@changzhou.gov.cn

电话: +49-(0)203-7399533

传真: +49-(0)203-7399575

常州市人民政府

网址: www.changzhou.gov.cn

常州市商务局

网址: swj.changzhou.gov.cn

Contacts

Changzhou International Investment Promotion Center

Changzhou International Investment Promotion Center was founded in 2006, which provides all-around professional services for overseas investors in Changzhou.

Email: ciip-contact@changzhou.gov.cn

Fax: +86-(0)519-88123099

Website: ciip.changzhou.gov.cn

Changzhou Economic Liaison Office in Shanghai

Address: Suite 663, East Offices, Shanghai Centre, 1376 Nanjing Road West, Shanghai

Tel: +86-(0)21-58201545

Changzhou Economic Liaison Office in Shenzhen

Address: 10F, Torch Building, 22 Yanshan Road, Shekou, Nanshan District, Shenzhen

Email: research1@gaogong123.com

Tel: +86-(0)755-26981898(717)

Fax: +86-(0)755-26981868

Changzhou Economic Representative Office in Germany

Address: Am Katharinenkloster 2, D-40489 Dusseldorf, Germany

Email: ciip-europeanoffice@changzhou.gov.cn

Tel: +49-(0)203-7399533

Fax: +49-(0)203-7399575

Changzhou Municipal People's Government

Website: www.changzhou.gov.cn

Changzhou Municipal Bureau of Commerce

Website: swj.changzhou.gov.cn



常州市产业招商地图
Infographic Guide to Investment in Changzhou
www.czcydt.cn/czsz/



投资常州
InvestChangzhou