



选择常州 — 从制造到“智造”

2017 投资常州

The Way to Intelligent Manufacturing
Investing in Changzhou

目录

Table of Contents

摘要

城市概览

投资环境

人居环境

联系方式

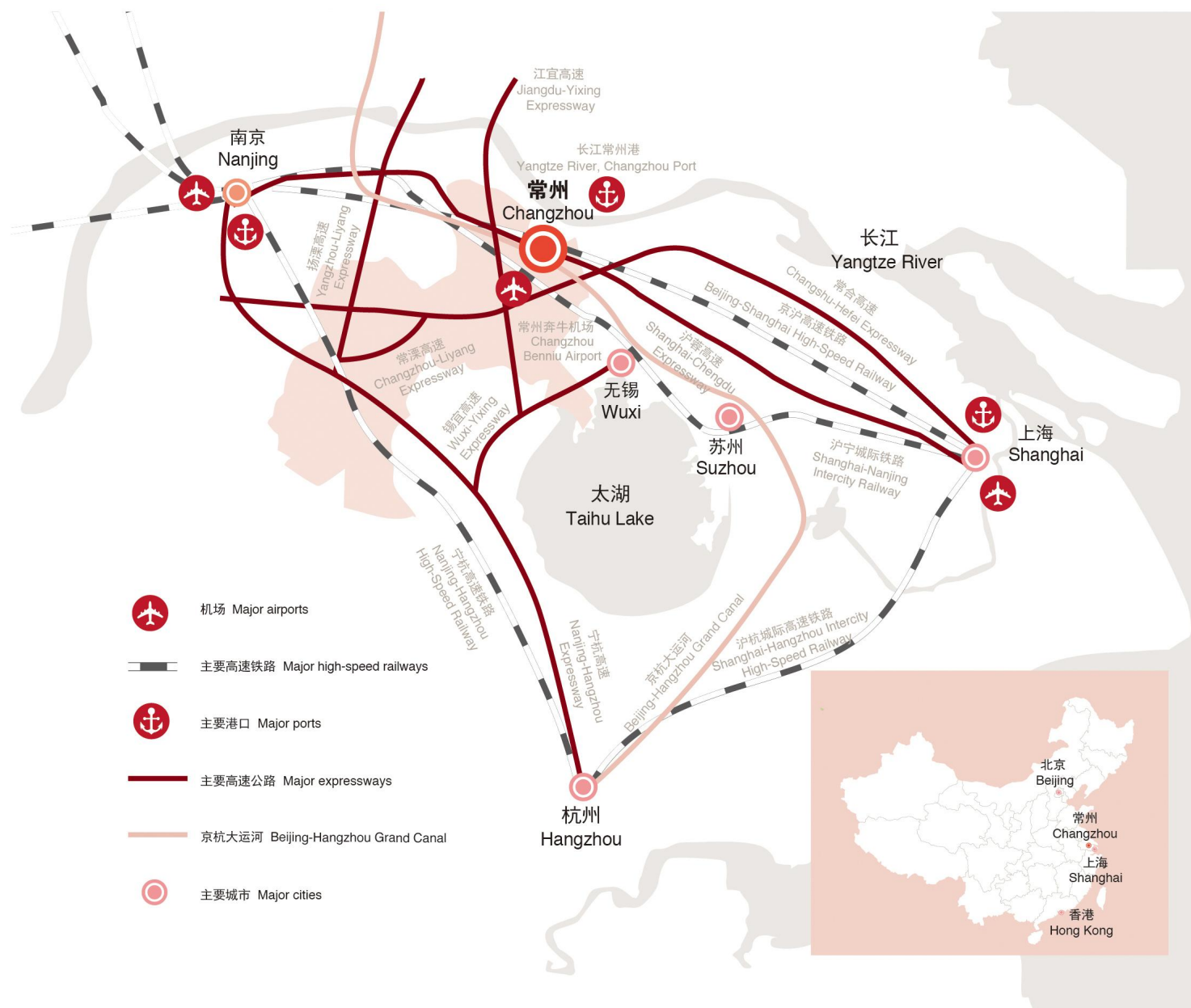
At a Glance

City Overview

Investment Climate

Quality of Life

Contacts



摘要

投资常州 — 请关注这组数据

At a glance

Investing in Changzhou – Learning these facts and figures



2015年福布斯中国商业城市排名第**12**位，其中私营经济活力指数居第**1**位
Ranked **12th** in “Forbes 2015 China’s Best Cities for Business”, ranked **1st** for private sector index



福布斯发布的《2015年中国大陆最具创新力的30个城市》中，常州位居第**10**位

Changzhou is ranked **10th** in “Forbes 2015 report on mainland China’s 30 most innovative cities”



2016年GDP总额为人民币**5774亿元**，按可比价计算同比增长**8.5%**

Total GDP of Changzhou in 2016 was **RMB 577.4 billion**, an increase of **8.5%** compared to the prior year



区位优势显著，位于长三角经济圈中心地带，紧邻上海，**1小时**内高铁直达

In the center of Yangtze River Delta economic zone, Changzhou enjoys close proximity to Shanghai, and is within **one hour** of Shanghai by high-speed rail



已有**3600**多家外国企业投资常州，其中包含**61**家世界五百强企业

Over **3,600** foreign companies have invested in Changzhou, including **61** Fortune 500 companies



以装备制造业为基础，常州正在打造**10大产业链**

Thanks to a well established equipment manufacturing base, Changzhou is developing **10 industry sectors**



已设立**86**家外资研发中心，省级以上科研项目**394**项

86 foreign invested R&D centers have been set up and **394** scientific projects at provincial level above

城市概览

City Overview



便捷交通

Transport connectivity

常州经济

Changzhou economy

产业集群

Industrial clusters

便捷交通

长三角重要交通枢纽

Transport connectivity

An important hub in the Yangtze River Delta



* 高铁车程
By train

南京
Nanjing

31分钟*
31 minutes

常州
Changzhou

无锡
Wuxi

11分钟*
11 minutes

苏州
Suzhou

10分钟*
10 minutes

常州本地交通枢纽情况

Changzhou transport connectivity

常州奔牛机场 (4E)

- 20多条国内航线至北京、广州、深圳等地
- 已开通台北、日本名古屋、泰国曼谷、老挝万象等国际(地区)航线, 预计未来陆续会开通至柬埔寨、越南、菲律宾等国际航线
- 2016年旅客吞吐量: 195万人次

铁路

- 5条铁路途经常州
- 主要铁路: 京沪高速铁路(至北京的高铁车程约4.5小时)
沪宁城际铁路(至上海的高铁车程约1小时)

高速公路

- 7条高速公路途经常州
- 主要高速公路: 沪蓉高速, 常合高速, 宁杭高速

长江常州港

- 10个万吨级泊位(包含一个十万吨级泊位)
- 2016年货物吞吐量: 3993万吨

河运

- 京杭大运河穿境而过, 自西北而东南联通整座都市

Changzhou Benniu Airport (4E)

- Serves more than 20 domestic destinations, including Beijing, Guangzhou, Shenzhen, etc.
- Serves international destinations, including Taipei, Nagoya, Bangkok and Vientiane. Expected new destinations in Cambodia, Vietnam and Philippines
- Passengers handled in 2016: 1.95 million passengers

Rail connection

- 5 railways passing through Changzhou
- Main railways: Beijing-Shanghai line (approximately 4.5 hours from Changzhou to Beijing), Shanghai-Nanjing line (approximately 1 hour from Changzhou to Shanghai)

Road connection

- 7 expressways passing through Changzhou
- Main expressways: Shanghai-Chengdu Expressway, Changzhou-Hefei Expressway, Nanjing-Hangzhou Expressway

Yangtze River Port of Changzhou

- 10 10,000-ton above deepwater berths (including a 100,000-ton above deepwater berth)
- Cargo handled in 2016: 39.93 million tons

River connection

- Beijing-Hangzhou Grand Canal passing through Changzhou



常州城市名片

Changzhou profile

面积: 4372平方公里
(市区面积2838平方公里)

行政区域: 下辖溧阳县级市和金坛、武进、新北、天宁、钟楼五个行政区

人口: 常住人口470万

气候: 亚热带湿润季风气候, 四季分明, 气候温润

地势: 平原为主

友好城市: 常州与全世界五大洲、21个国家缔结了43个国际友好城市, 包括:
美国: 罗克福德市、布法罗市
俄罗斯: 托姆斯克市、斯塔夫罗波尔市
德国: 埃森市、明登市
英国: 索利哈尔市
日本: 高规市、所泽市
韩国: 南扬州市、春川市
比利时: 罗莫尔市
意大利: 普拉托市
荷兰: 蒂尔堡市
芬兰: 萨塔昆塔地区等

Area: 4,372 KM²
(urban area 2,838 KM²)

Districts: County-level city: Liyang
Districts: Jintan, Wujin, Xinbei, Tianning and Zhonglou

Population: 4.70 million

Climate: Subtropical humid and warm monsoon climate with four distinct seasons

Topography: Plains

Sister cities: Changzhou has established a sister city relationship with 43 cities in 21 different countries across 5 continents, including:
US: Rockford, Buffalo
Russia: Tomsk, Stavropol
Germany: Essen, Münden
UK: Solihull
Japan: Takatsuki, Tokorozawa
Korea: Namyangju, Chun Cheon
Belgium: Lommel
Italy: Prato
Netherlands: Tilburg
Finland: Satakunta...

上海
Shanghai

22分钟*
22 minutes

常州距离上海约160公里

Changzhou to Shanghai: 160KM

浦东国际机场 (4F)
虹桥国际机场 (4E)
100多家中外航空公司连接282个国内外城市

上海港
2016年港口货物吞吐量: 5.14亿吨

中国 (上海) 自由贸易试验区
(“自贸区”)
为常州企业更好对接自贸区, 常州已在自贸区设立“服务窗口”

Pudong International Airport (4F)
Hongqiao International Airports (4E)
Over 100 domestic and international airlines serve 282 domestic and international destinations

Shanghai port
Cargo handled in 2016: 514 million tons

China (Shanghai) Pilot Free Trade Zone (“PFTZ”)
To better link business in Changzhou with PFTZ, a “service window” has been set up in PFTZ

常州距离南京约110公里

Changzhou to Nanjing: 110KM

禄口机场 (4F)
通往60个国内城市32个国际城市和地区

长江南京港
辐射80多个国家和地区近200个港口

Lukou International Airport (4F)
Connecting with 60 domestic cities and 32 international destinations

Yangtze River Port of Nanjing
Connecting with nearly 200 ports in over 80 countries

常州经济

2016年常州GDP总额5774亿元，人均可支配收入46058元，位居中国城市前列

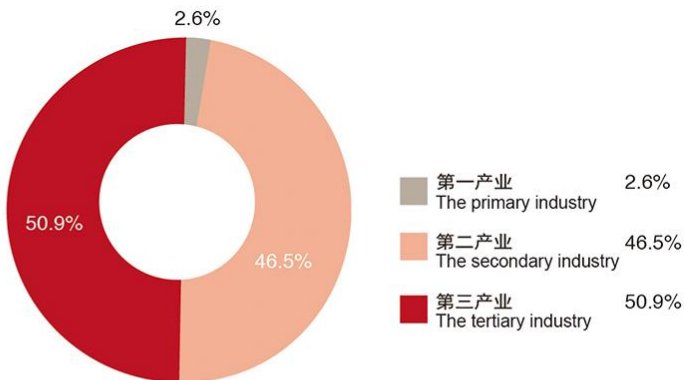
Changzhou economy

In 2016, the total GDP of Changzhou was one of the top 20% of all Chinese cities with RMB 577.4 billion and disposable income per capita of RMB 46,058



经济规模 Size of the economy

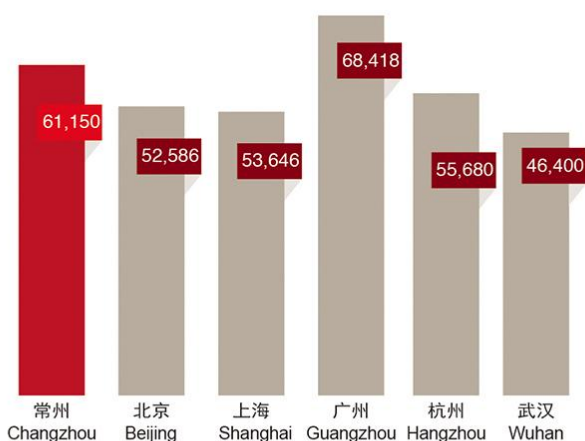
2016年常州GDP产业构成
2016 Changzhou GDP by industry



- 2016年常州GDP总额5774亿元，约合869亿美元，同比增长8.5%
- 第二产业以装备制造业为主
- 常州服务业发展迅速，正打造十大服务业：金融服务业、现代物流业、科技服务业、软件和信息服务、商务服务业、旅游休闲业、文化创意业、电子商务、健康服务业及养老服务业
- The total 2016 GDP of Changzhou was RMB 577.4 billion (USD 86.9 billion equivalent) representing growth of 8.5% compared to the previous year
- Secondary industry primarily consists of equipment manufacturing
- Service industry is growing rapidly and Changzhou is developing ten service industry sectors including financial service, logistics, science and technology service, software and IT service, business professional service, tourism and leisure, cultural and creativity, e-commerce, healthcare and elderly care service



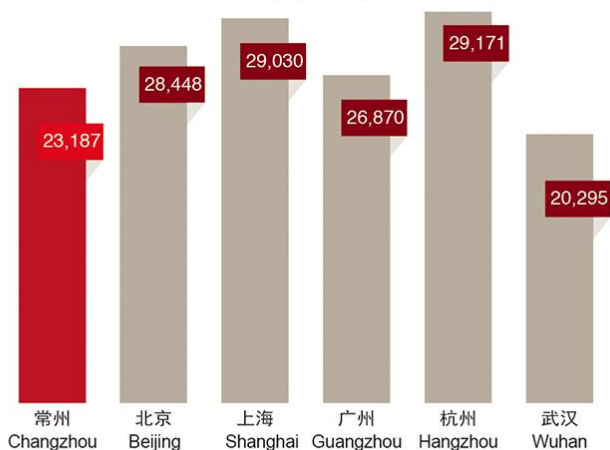
2016年上半年常州人均GDP与其他城市比较 (人民币:元)
Comparison of GDP per capita for first half of 2016 (RMB)



- 2016年常州人均GDP为12.3万元，约合1.85万美元，按可比价增长8.4%
- GDP per capita of Changzhou in 2016 was RMB 123,000 (USD 18,500 equivalent) and grew by 8.4%

消费市场容量 **Changzhou consumer market**

2016年上半年城镇居民人均年可支配收入比较 (人民币:元)
Comparison of disposable income per capita for first half of 2016 (RMB)



- 2016年常州社会消费品零售总额2202.8亿元，约合332亿美元，同比增长10.7%
- 2016年常州城镇居民人均年可支配收入为46058元，约合6934美元
- Total retail sales of consumer goods in 2016 was RMB 220.3 billion (USD 33.2 billion equivalent)
- Disposable income per capita of Changzhou was RMB 46,058 in 2016, equivalent to USD 6,934

产业集群

借助装备制造业的雄厚基础，常州正在推进十大产业链建设

Industrial clusters

Thanks to the well established equipment manufacturing base, Changzhou is developing ten industry sectors



整车领域

产业链	轨道交通	汽车及零部件	农机和工程机械产业链
知名企业	新誉集团 今创集团股份有限公司 江苏纳博特斯克今创轨道设备有限公司 南车戚墅堰机车有限公司 江苏常牵庞巴迪牵引系统有限公司 中车戚墅堰机车车辆工艺研究所有限公司	博世力士乐(常州)有限公司 通用电气(常州)汽车配件公司 电装(常州)燃油喷射系统有限公司 普利司通(常州)汽车配件有限公司 麦格纳动力总成(常州)有限公司 蒂森克虏伯发动机系统(常州)有限公司	小松(常州)工程机械有限公司 爱科(常州)农业机械有限公司 现代(江苏)工程机械有限公司 井关农机(常州)有限公司 柳工常州挖掘机有限公司 特雷克斯(常州)机械有限公司
配套资源	轨道交通产业园	新能源汽车产业园	区域配套产业链完整
观察	常州的轨道交通产业已具备较为完整的产业链，从研发、生产制造到配套。产品涵盖车体、牵引传动、电气控制、转向架等，产品大量为国内城市轨道交通车辆制造企业配套，并为庞巴迪、西门子、阿尔斯通等国际制造商供货	借助现有汽车零部件（例如：发动机系统、底盘系统、车身及车身附件等）的制造基础，常州正着力打造整车制造，重点发展乘用车、客车、轻卡、商务车及新能源汽车等整车。成功引进东风、北汽、众泰、上海大通专用车等4个汽车整车项目，北汽新能源、车和家等新能源汽车整车项目，以及北汽西门子电驱动、ATL 电池、波士顿电池、中航锂电等一系列新能源汽车关键零部件项目	常州农机生产历史悠久，产业基础好，全国知名度高；常州还是工程机械产业重要的生产基地，本地民营企业国内领先，一些国际业内领先企业已落户常州

Vehicle domain

Sectors	Rail transportation	Automobile and parts	Agricultural and engineering machinery
Renown enterprises	New United Group KTK Group Co., Ltd. Jiangsu Nabtesco KTK Railway Equipment Co., Ltd. CSR Qishuyan Co., Ltd. Jiangsu Changqian Bombardier Traction System Co., Ltd. CSR Qishuyan Institute Co., Ltd.	Bosch Rexroth (Changzhou) Co., Ltd. General Electric (Changzhou) Automobile Fittings Co., Ltd. DENSO (Changzhou) Fuel Injection System Co., Ltd. Bridgestone(Changzhou) Auto Fittings Co., Ltd. Magna Powertrain (Changzhou) Co., Ltd. Thyssenkrupp Valvetrain China Ltd.	Komatsu (Changzhou) Construction Machinery Corp. AGCO (Changzhou) Agricultural Machinery Co., Ltd. Hyundai (Jiangsu) Construction Machinery Co., Ltd. Iseki Changzhou Mfg. Co., Ltd. Liugong Changzhou Excavator Co., Ltd. Terex (Changzhou) Machinery Co., Ltd.
Supporting facilities	Rail transportation industrial park	New energy vehicle industrial park	Complete industry value chain
Observation	From R&D and manufacturing to supporting industry, Changzhou has a relatively complete rail transportation industry value chain. Products include train car body, traction drives, electronic control, bogies and so on. These products are not only supplied for the domestic market but also for international manufacturers such as Bombardier, Siemens, Alston, etc.	Based on the automobile parts (e.g. engine, chassis, car body, accessories, etc.) manufacturing experience, Changzhou is focusing on the development of automobile manufacturing, such as passenger cars, bus, light trucks and commercial vehicles. Successfully introduced 4 vehicle projects including Dongfeng Motor, BAIC, ZOTYE Auto and Shanghai MAXUS as well as some new energy vehicle projects which include BAIC BJEV and Chehejia. In the meantime, a series of new energy vehicle key parts projects like BAIC Siemens E-drive system, ATL battery, Boston Power and China Aviation Lithium Battery was introduced.	Changzhou has a long history and solid base of agricultural machinery manufacturing and it enjoys a sound reputation in China. Changzhou is also a key industrial base for engineering machinery manufacturing. Local private companies play a leading role in the domestic market while a number of famous international players also have a presence in Changzhou

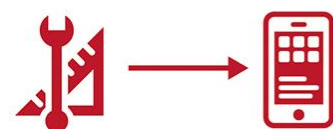
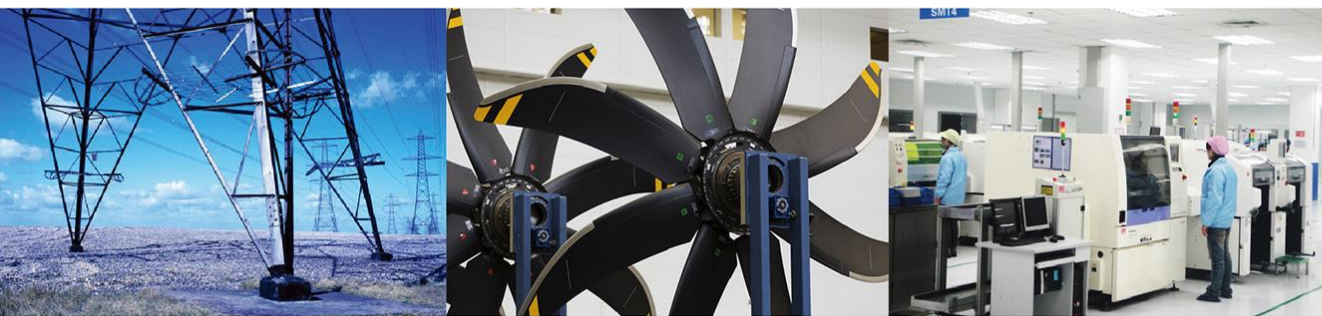


新兴材料、能源和医药领域

产业链	太阳能光伏	碳材料	新医药	新光源
知名企业	常州天合光能有限公司 常州协鑫光伏科技有限公司 常州亿晶光电科技有限公司 常州亚玛顿股份有限公司 常州顺风发电设备有限公司	常州天常玻纤复合材料有限公司 常州二维碳素科技有限公司 常州碳元科技发展有限公司 常州宏泰摩擦材料有限公司 常州第六元素材料科技股份有限公司 中简科技发展有限公司	康辉控股(中国)公司(被美国美敦力收购) 常州创生医疗器械有限公司(被美国史赛克收购) 江苏太平洋美诺克生物药业有限公司 常州巴奥米特医疗器械有限公司	晶品光电(常州)有限公司 住友电工(常州)半导体材料有限公司 光宝光电(常州)有限公司 江苏国星电器有限公司
配套资源	光伏产业园	功能新材料产业园 西太湖科技产业园	生物医药产业园 西太湖国际医疗产业园	半导体照明产业园
观察	从研发、设备制造、安装、光伏应用到光伏辅材,常州光伏产业链完备,产品涵盖拉晶、铸锭、切片、电池、组件、系统集成等。拥有一批具有自主知识产权和自主品牌的龙头骨干企业	依托产业园,常州正在积极引进石墨烯、碳纳米管、富勒烯等领域领军型人才和研发平台,重点开发智能终端用石墨烯透明导电薄膜、石墨烯复合锂离子电池负极材料等产品	常州新医药产业基础良好,主要涵盖生物制药、化学药品和医疗器械等,并拥有一批有竞争力的新产品群和上市公司	新光源产业在中国的市场潜力巨大,在一大批国内外知名企业的带动下,常州正在从传统照明产品向LED产品转型

New material, energy and pharmaceutical

Sectors	Solar photovoltaic	Carbon material	New pharmaceutical	New lighting
Renown enterprises	Trina Solar Energy Co., Ltd. Changzhou GCL Photovoltaic Technology Co., Ltd. Changzhou EGing Photovoltaic Technology Co., Ltd. Changzhou Almaden Co., Ltd. Changzhou Sinfon Electric Power Equipment Co., Ltd.	Changzhou CTC Technical Fabrics Co., Ltd. 2D Carbon (Changzhou) Tech Co., Ltd. Changzhou Tanyuan Technology Development Co., Ltd. Changzhou Hongtai Friction Material Co., Ltd. The Sixth Element (Changzhou) Co., Ltd. Sinofibers Technology Co., Ltd.	China Kanghui Holding Inc. (acquired by Medtronic Inc.) Trauson (Jiangsu) Medical Instrument Co., Ltd. (acquired by Stryker Corporation) Jiangsu Pacific Meinuoke Biopharmaceutical Co., Ltd. Changzhou Biomet Medical Devices Co., Ltd.	Epicrystal (Changzhou) Corporation Limited Sumitomo Electric Semiconductor Materials (Changzhou) Co., Ltd. Lite-on Technology (Changzhou) Co., Ltd. Jiangsu Guoxing Electric Equipment Co., Ltd.
Supporting facilities	PV industrial park	Functional new materials industrial park West Taihu lake science and technology industrial zone	Biopharmaceutical and medical products industrial park West Taihu Lake International Medical Industrial Park	Semiconductor lighting industrial park
Observation	From R&D, equipment manufacturing, installation, PV appliances to PV auxiliary materials, Changzhou has a complete PV industry value chain. PV products include pulling, ingots, slice, batteries, components, system integration, etc. There are a number of leading enterprises with their own IPs and brands in Changzhou	By utilizing the relevant industrial parks, Changzhou is actively bringing in talents and R&D projects in relation to graphene, carbon nanotubes, fullerenes and etc. To focus on developing graphene transparent conductive film used in intelligent terminals, cathode material for graphene composite lithium ion battery and other products	Changzhou has a well established pharmaceutical industry base covering biopharmaceutical, chemical medicine and medical devices. There are a number of competitive new products and listed companies	The new lighting market has a huge potential in China. Driven by a number of famous international and domestic enterprises, Changzhou is transforming the manufacturing from traditional lighting products to LED products



智能制造领域

产业链	智能电网	通用航空	智能数控和机器人
知名企业	江苏上上电缆集团有限公司 常州东芝变压器有限公司 莱尼(常州)电子有限公司 常州西电变压器有限责任公司 常州安凯特电缆有限公司	新誉集团 北京通用航空常州飞机工业有限公司 波兰艾雷奥特公司 天岫(常州)智能科技有限公司 威翔航空科技(常州)有限公司	卡尔迈耶(中国)有限公司 安川(中国)机器人有限公司 江苏金昇实业股份有限公司 江苏新瑞机床(集团)有限公司 常州阿奇夏米尔机床有限公司
配套资源	智能电网产业园	航空产业园 常州奔牛机场	机器人及智能装备产业园
观察	常州智能电网产业基础雄厚、技术含量高，拥有一批国内外知名企业，是全国最大的特高压输变电设备制造基地，未来发展重点是积极消化吸收国外先进技术，提高研发、设计、制造和测试能力	借助航空产业园、常州奔牛机场以及本地的新誉集团(与庞巴迪合作的飞机改装项目进展顺利、并连续完成了多个航空企业收购)等资源，常州航空产业的发展方向以通用航空飞机整机生产、无人机、发动机、航空深度保养和大型维修/改装业务和航空服务业为主	常州智能数控产业以数控机床制造(包括产品加工中心、数控龙门镗铣床、数控车床、数控钻床等)为依托具有一定的基础；尽管机器人产业刚起步，但已有专业生产商日本安川电机株式会社在常州投资机器人项目

Intelligent manufacturing

Sectors	Smart grid	General aviation	Intelligent CNC and robot
Renown enterprises	Jiangsu Shangshang Cable Group Co., Ltd. Changzhou Toshiba Transformer Co.,Ltd. Changzhou Leoni Electronic Co., Ltd. Changzhou XD Transformer Co., Ltd. Changzhou NKT Cables Co., Ltd.	New United Group Beijing General Aviation Group AERO AT Aviation Technologies Volitation (Changzhou) Intelligent Technology Co., Ltd. Aerjones Aviation (Changzhou) Co.,Ltd.	Karl Mayer (China) Co., Ltd. Yaskawa (China) Robotics Co., Ltd. Jiangsu Jinsheng Industry Co., Ltd. Jiangsu Xinrui Machine Tool Group Co., Ltd. Changzhou AgieCharmilles Machine Tool Co., Ltd.
Supporting facilities	Smart grid industrial park	Changzhou aviation industrial park Changzhou Benniu Airport	Robot and intelligent equipment industrial park
Observation	Changzhou has a strong foundation and technical base with respect to the smart grid industry. With a number of famous domestic and international enterprises, Changzhou is the largest manufacturing base of UHV AC power transmission and transformation equipment in China. The future development of the industry is focused on attracting more advanced foreign technology and improving the capability on R&D, design, manufacturing and testing	Relying on the resources such as aviation industrial park, Changzhou Benniu airport and New United Group (cooperating smoothly with Bombardier in airplane refit projects and acquiring several aviation business), Changzhou is developing the aviation industry with a main focus on 1) production of general aviation aircraft, 2) repair, maintenance and modification of unmanned aerial vehicle, engines, as well as 3) aviation services	The development of the intelligent CNC industry in Changzhou is based on the foundation of CNC machine manufacturing (including products processing center, CNC gantry milling machine, CNC lathe, CNC drilling machine, etc.). Although the robotics industry is still in its early stages, a specialized Japanese manufacturer Yaskawa has invested in Changzhou

投资环境

Investment Climate



外商投资现状

Foreign investment in Changzhou

人力资源和研发力量

Human resource and R&D capability

基础设施及配套供应情况

Infrastructure and supporting facilities

政府服务

Government service

外商投资现状

已有来自107个国家和地区的3600多家外国企业投资常州，2016年外商投资企业新增总投资70.77亿美元

Foreign investment in Changzhou

Over 3,600 enterprises from 107 different countries and regions have invested in Changzhou and there was an increase of foreign investment of USD 7.08 billion in 2016

外商投资现状

- 已有61家世界500强企业（不含中资）投资常州
- 外商投资性公司7家
- 常州实有外商投资企业3600多家，2016年外商投资企业新增总投资70.77亿美元，投资额超亿美元外商投资企业135家，其中制造业外资企业71家（总投资超2亿美元29家），服务业外资企业64家

Foreign investment in Changzhou

- 61 fortune 500 companies (excluding Chinese Fortune 500 enterprise) invested in Changzhou
- 7 foreign invested China holding companies
- There have been over 3,600 foreign invested enterprises (“FIEs”) in Changzhou. There was an increase of foreign investment of USD 7.08 billion in 2016. 135 FIEs have a total investment of more than USD 100 million, 71 of which are manufacturing FIEs (including 29 FIEs with a total investment of more than USD 200 million), the remaining 64 FIEs are service FIEs



企业感言

What businesses say

“常州地处长江三角洲，周边有很多重要城市相邻，交通便利。水电供应稳定，运营成本相对低廉，是值得投资的地区。”

—— 蒂森克虏伯发动机系统(常州)有限公司制造经理：顾瑞安

“Changzhou is located in the Yangtze River Delta, adjacent to many main cities, Changzhou is an ideal place to invest for its convenient transportation, stable supply of utilities and relatively low operating costs.”

- Christian Boersma, Manufacturing Manager, ThyssenKrupp Valvetrain China Ltd.

“必圣士认为，中国的农业机械市场潜力巨大，未来的五年将会是迅速发展的时期，由于常州良好的营商环境，必圣士将会考虑扩大在常州的投资。”

—— 必圣士(常州)农业机械制造有限公司总经理：Oscar Angheben

“BCS consider that there is a huge potential in China's agricultural machinery market, 2015 to 2020 will be a booming period. BCS will consider increasing its investment in Changzhou due to Changzhou's favorable business environment.”

- Oscar Angheben, General Manager, BCS S.p.A



人力资源和研发力量

常州本地院校为长三角地区提供充沛的人力资源

Human resources and R&D capability

Local education institutions provide the Yangtze River Delta with sufficient human resources

常州教育资源

学校类型	名称	毕业生情况	校企合作
全日制普通本科院校	常州大学*	2016年, 本科、专科毕业生3.68万余人	为满足企业用工需求, 常州本地院校与企业联合开办“定制班”, 培养专需技术工人。例如: “博世力士乐班”、“久保田班”、“常林班”、“玉柴班”、“卡特彼勒班”、“卡尔迈耶班”、“蒂森克虏伯班”等覆盖了10多个专业, 每年有四百多名学生被纳入培养计划中
	江苏理工学院		
	常州工学院		
中高级职业教育院校	河海大学常州校区	2016年, 硕士研究毕业生730人	
	常州信息职业技术学院*	2016年, 技工院校毕业生8772人	
	常州纺织服装职业技术学院*		
	常州轻工职业技术学院*		
	常州工程职业技术学院*		
	常州机电职业技术学院*		
	江苏城乡建设职业学院		
	建东职业技术学院		
	江苏省常州技师学院		
	常州交通技师学院		
常州冶金技师学院			
常州旅游商贸高等职业技术学校			
常州铁道高等职业技术学校			
刘国钧高等职业技术学校等			
成人高校	常州市开放大学 武进开放大学等		

注*: 入驻常州科教城的高校

Education resources in Changzhou

Institutions	Name	Graduates	Cooperation with business
Full-time universities	Changzhou University*	Around 37 thousands undergraduates and college graduates in 2016	In order to meet local business' needs for skilled workers, some education institutions in Changzhou have launched "tailored courses" with businesses, such as "Bosch Rexroth Class", "Kubota Class", "Changlin Class", "Yuchai Class", "Caterpillar Class", "Karl Mayer Class", "ThyssenKrupp Class", etc. These tailored courses cover more than 100 majors and around 400 students are enrolled in these programmes each year
	Jiangsu University of Technology		
	Changzhou Institute of Technology		
	Hohai University Changzhou Campus		
Vocational education colleges	Changzhou Institute of Information Technology*	There were 730 master graduates in 2016	
	Changzhou Textile Garment Institute*	8,772 skilled workers were graduated in 2016	
	Changzhou Institute of Light industry Technology*		
	Changzhou Institute of Engineering Technology*		
	Changzhou Institute of Mechatronic Technology*		
	Jiangsu Urban and Rural Construction College		
	Jiandong College		
	Jiangsu Changzhou Technician College		
	Changzhou Transportation Technician College		
	Changzhou Metallurgy Technician College		
Changzhou Technical Institute of Tourism & Commerce			
Changzhou Higher Vocational Technical College of Railway			
Changzhou Liu Guojun Vocational Technology College...			
Adult colleges	Changzhou Open University		
	Wujin Open University...		

Note*: Located in Changzhou Science and Education Town

常州劳动力成本分析

- 常州城镇非私营单位在岗职工年平均工资为70144元
- 常州2016年社会保障金企业缴纳比例约为员工基本工资的41.1%

Analysis of Labour cost in Changzhou

- The average annual salary of an employee working in the Changzhou urban area (excluding sole traders) was RMB 70,144
- Social security contribution borne by employer in Changzhou was 41.1% of the basic salary in 2016



常州科教城

Changzhou Science and Education Town

截至 2016 年底入驻研发机构及高科技企业近 2000 家，拥有研发人才总数 18000 多人，拥有学生人数 8 万多人

By 2016, around 2000 R&D institutes and high-tech companies have been established and there are over 18,000 R&D talents and more than 80,000 students

融大学、研发机构、企业、孵化器于一体的公共平台、教育和科技研发高地

A highland of public platform, education and R&D, which integrates universities, R&D institutions, enterprises and incubators

作为江苏省 50 个重点项目之一，进驻常州科教城的企业将享受极具竞争力的优惠政策

It is one of the 50 key projects in Jiangsu Province. Enterprises that have a presence in the Changzhou Science and Education Town enjoy competitive preferential policies

中国第一家以高等职业教育为特色的教育园区，并积极引进德国“**二元制**”职业教育模式

The first education town features in higher vocational education in China. It is also actively introducing **German vocational education “Dual System”**

“中德创新园区”被国家发改委和欧盟驻华使团授予“中欧城镇化伙伴关系示范区”，江南**克拉尼**设计院落户常州科教城

“Sino-Germany Innovation Park” was awarded Exemplary EU-China Urban Cooperation Recognition by National Development and Reform Commission and European Commission. **Colani** Design Institute has been set up in the Science and Education Town



人力资源和研发力量

地方人才激励政策完善，研发活跃

Human resources and R&D capability

Changzhou has comprehensive talent policies and it is also active in R&D activities

主要人才政策

政策名称	支持对象	政策概要
龙城英才计划	领军人才领办和创办科技企业	根据项目情况给予最高1300万的股权投资支持和创新企业资金资助
831高层次创新创业人才培养工程	高层次创新创业人才	831 高层次创新创业人才培养专项资金 选送培养对象到高等院校、科研院所、重点实验室、博士后工作站、重点工程中心交流访学
进站博士后专项资金资助	博士后	研究项目取得优秀科研成果作出最高8万元的奖励 每名博士后每站支持总额上限为20万元

注：具体政策参考网站<http://www.cztp.org>

Major talent policies

Policy	Target talent	Summary of major policies
Longcheng Talent Plan	Leading talents venture science-and-technology enterprises	Up to 13 million equity financing and subsidies according to the project
831 Innovation Talents Project	High caliber innovation talents	831 innovation Talent Projects special fund Selected talents will be exchanged to universities, scientific research institutes, key laboratories, post-doctoral workstations and key engineering center(s) for further development
Subsidies for post-doctorate researchers	Post-doctorate	Up to RMB 80 thousand in subsidies for outstanding achievements in scientific research projects Up to RMB 200 thousand in subsidies for each post-doctoral researcher per post

Note: Refer to <http://www.cztp.org>

科研实力

2016年，全市R&D经费支出占GDP比重预计2.72%

新增高新技术企业121家，累计拥有高新技术企业1231家

高新技术产业预计完成产值5400亿元，占规模以上工业产值比重44%

争取省级以上科技计划项目394项

完成专利申请43860件

R&D capability

In 2016, the city's R&D spending as a share of GDP is expected to 2.72%

121 newly recognized High and New Technology Enterprises ("HNTEs"), 1231 totally

High and new technology industry is expected to complete the output value RMB 540 billion, accounting for 44% of the total industrial output value over the scale

394 scientific projects at provincial level above

43860 pieces registered patents

• 福布斯发布的《2015年中国大陆最具创新力的25个城市》中，常州位居第10位

• Changzhou is ranked 10th in Forbes' 2015 report on mainland China's 25 most innovative cities

基础设施及配套供应情况

基础设施完善，配套齐全，公用事业成本合理

Infrastructure and supporting facilities

Changzhou has well established infrastructure, complete supporting facilities and reasonable utility cost

土地、厂房和写字楼供应

- 工业用地都配备基本的公用设施，如水、电、天然气以及连接高速公路的道路
- 高级写字楼一般位于市中心，来往机场、火车站和工业园区交通便捷

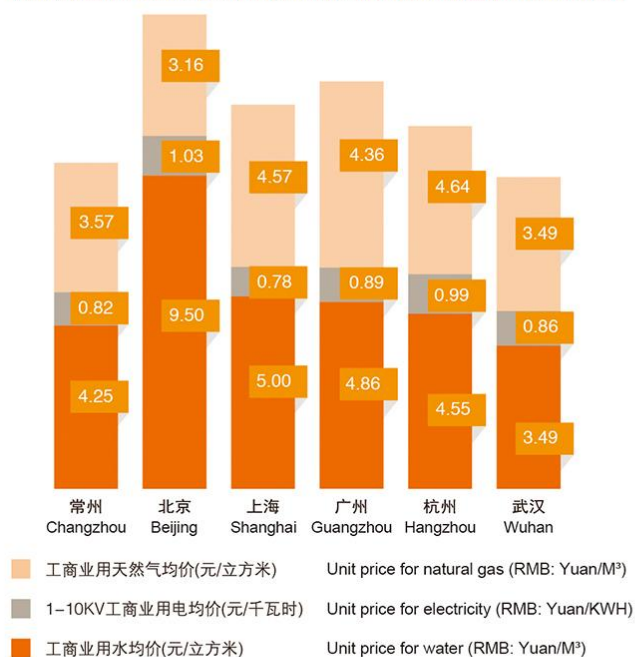
Supply of land, plant and office building

- Industrial land are equipped with public facilities such as water, electricity and natural gas supply as well as roads connected to expressway
- High-end office buildings are generally located in city center with convenient access to airport, railway stations and industrial zones

公用事业成本（水、电和天然气）

类别	单位价格	
水（元/立方米）		
居民生活用水（阶梯式水价）	3.77	
生产类（一般工商业）	4.25	
生产类（六大行业）	5.47	
特种用水	5.52	
电（元/千瓦时）		
	一般工商业及其他	大工业
1KV以下	0.8366	不适用
1-10KV	0.8216	0.6601
20-35KV以下	0.8156	0.6541
35-110KV	0.8066	0.6451
110KV	不适用	0.6301
220KV及以上	不适用	0.6151
气（元/立方米）		
居民用气（小于300立方）	2.45	
工商业用气	3.57	
车用天然气	4	

2016年常州与其他主要城市单位公用事业成本比较
Comparison of utility cost for 2016



Utility (water, electricity and natural gas) cost

Items	Unit price	
Tap water (RMB: Yuan/M ³)		
Resident (progressive rate)	3.77	
Manufacturing (general commercial & industrial business)	4.25	
Manufacturing (six high consumption industries)	5.47	
Special industry	5.52	
Electricity (RMB: Yuan/KWH)		
	General commercial & industrial business and others	Large scale industrial business
Below 1KV	0.8366	N/A
1-10 KV	0.8216	0.6601
20-35KV below	0.8156	0.6541
35-110KV	0.8066	0.6451
110 KV	N/A	0.6301
Above 220KV	N/A	0.6151
Gas (RMB: (RMB: Yuan/M ³)		
Resident use	2.45	
Commercial & industrial use	3.57	
Car-use	4	

基础设施及配套供应情况

Infrastructure and supporting facilities

物流运输成本

普通货物从常州到以下目的地的参考运输价格及时间		
目的地	参考运费 (元/公斤)	运输时间 (天)
上海	0.4	2-3
北京	0.9	3-4
广州	1.1	4-5

标准集装箱经由上海外高桥或洋山港的参考运输成本及时间		
目的地	参考运费 (美元)	运输时间 (天)
香港	100	3
大阪	100	3
新加坡	300	7-10
汉堡	1,200	28-35
洛杉矶	1,500	15-20

配套供应

配套设施	现状描述
城市交通	城市快速交通系统 (“BRT”) 迄今已开通15条BRT线路 实施全程统一的低票价, 持卡乘客只需0.6元, 无卡乘客1元 首个获得“詹天佑奖”的公共交通项目
地铁	2012年获批4条线路规划 常州地铁1、2号线已开工建设
配套服务机构	金融机构 1家政策性银行 5家大型股份制银行 10家股份制银行 4家城市商业银行 1家外资银行 70家保险公司 (1家外商独资)
	专业机构 122家律师事务所 34家会计师事务所
政府扶持基金	政府成立了龙城英才创业投资基金, 由社会创投基金和政府各自出资投资企业 政府在逐步创新财政扶持的方式, 如担保引导基金 (政府参股中小企业, 引导融资)、现代风险保证基金、创投担保资金等

Logistics cost

Estimated transport cost and transport time for domestic shipping		
Destination	Referential unit cost (RMB: Yuan/KG)	Transit time (Days)
Shanghai	0.4	2-3
Beijing	0.9	3-4
Guangzhou	1.1	4-5

Estimated cost and transit time for shipping a standard container Changzhou via Waigaoqiao or Yangshan ports in Shanghai		
Destination	Referential unit cost (USD per container)	Transit time (Days)
Hong Kong	100	3
Osaka	100	3
Singapore	300	7-10
Hamburger	1,200	28-35
Los Angeles	1,500	15-20

Supporting facilities

Supporting facilities	Description
Urban	Bus Rapid Transit (“BRT”) 15 lines are in operation TStandard fare applies to all lines (single fare: RMB 1, single fare with pre-paid IC card: RMB 0.6) The first public transportation project won China civil engineering Zhan Tianyou Prize
Underground	4 underground lines have been approved in 2012 Line 1 and Line 2 was under construction
Supporting service provider	Financial service provider 1 policy bank 5 large-scale joint-stock banks 10 joint-stock banks 4 municipal commercial banks 1 foreign-invested bank 70 insurance companies (including 1 wholly foreign invested insurance company)
	Professional service provider 122 law firms 34 accounting firms
Government supporting fund	The Changzhou government launched Longcheng Talents Venture Capital fund to invest in business. The fund has both venture capitalist and the Changzhou government as investors. The Changzhou government is also developing innovative ways of providing financial support, such as setting up guarantee or leading fund (i.e. Government participating corporate finance), modern risk guarantee fund, venture capital guarantee fund, etc.



企业感言
What businesses say

“常州是一个开放、稳定、和谐、文明的宜居城市，同时，政府效能高、市场环境规范、人文修养好，是一个值得投资、发展的首选城市。”

——江苏常发实业集团有限公司副董事长：谈乃成

“Changzhou is a livable city with openness, stabilisation, harmony and civilisation. It is a city worth investing into because of its efficient government, regulated market and humanity.”

—Naicheng Tan, Vice Chairman, Changfa Group

“常州是医疗器械产业的聚集地，本地制造业基础良好，发展潜力较大，当地政府服务意识强，是我们投资的理想之地。”

——常州华森医疗器械有限公司财务总监司：马铮贤

“Changzhou is an ideal place for us to invest due to its medical industrial cluster, strong local manufacturing sector, huge development potential and good government service awareness.”

—Zhengxian Ma, CFO, Changzhou Waston Medical Appliance Co., Ltd.

政府服务

常州政府用较强的服务意识，先进的服务理念和高质量的服务帮助企业在常州成长

Government service

The Changzhou government uses strong service awareness, an advanced service concept as well as high quality service to support business growth in Changzhou



知识产权保护

常州十分重视知识产权保护工作，独创的知识产权保护多部门联合执法工作得到美国强生、通用电气、中国外商投资企业协会优质品牌保护委员会等知名跨国公司和机构的认可

Intellectual property right protection

Changzhou focuses closely on the protection of IP rights. The multi-division action of combined law enforcement on IP rights protection originally created by Changzhou has won high recognition from some famous multi-national companies and organizations, such as Johnson&Johnson, General Electric from the US and QBPC

<p>常州高素质招商团队 Qualified Changzhou investment promotion service team</p>	<ul style="list-style-type: none"> 招商人员综合素质强，其中本科、研究生、博士学历的人数占总人数的90%左右 招商人员的平均工作年限约5年，其中约60名人员从事招商工作10年以上 招商人员掌握的语种包括英语、日语、德语、法语、俄语、韩语、阿拉伯语、意大利语
<p>常州市国际投资促进中心 Changzhou International Investment Promotion Center</p>	<ul style="list-style-type: none"> 为投资项目咨询提供快速高效的服务 协调投资者和政府各部门的联络

企业感言

What businesses say

“常州西太湖科技产业园与企业沟通愈发紧密。在推进整体建设中，园区帮助企业协调解决项目推进过程中存在的土地、用水、用电等问题，同时创新工作与服务模式，根据企业存在的困难，细化任务，明确分工，使得整体的服务水平在不断提升。”

——江苏博睐生技医疗科技有限公司行政总监：巫伟

“West Taihu Lake International Medical Industrial Park kept close communication with us. The industrial Park helped us solve problems such as land utilities throughout the development of the project. The Industrial Park is also improving its quality of service by providing us with more tailored, creative and specified services to meet our practical business needs.”

- Wei Wu, Executive Director, PlexBio Co., Ltd.

人居环境

Quality of Life



人居环境

Quality of Life

- 2所国际学校（天合国际学校、威雅国际公学）
- 10多家双语幼儿园
- 2 International schools (Changzhou Trina International School, Wycombe Abbey International School)
- More than 10 bilingual kindergartens

- 双桂坊美食街
- 各式中西餐厅、酒吧
- Shuang Gui Fang food street
- Variety of Chinese and Western restaurants and bars

- 沃尔玛、山姆会员店、家乐福、欧尚、麦德龙、乐购等大型超市
- 包括月星环球港在内的36座城市综合体
- 4座高尔夫球场
- Wal-Mart, Sams Club, Carrefour, Auchan, Metro, Tesco etc.
- 36 HOPSCA including Jiangnan Global Harbor Mall
- 4 Golf courses

- 环球恐龙城 (5A)
- 天目湖旅游度假区 (5A)
- 南山竹海 (5A)
- 环球动漫嬉戏谷 (4A)
- 春秋淹城旅游区 (4A)
- 茅山旅游度假区 (4A)
- 东方盐湖城
- Universal Dinosaur Park (5A)
- Tianmu Lake Tour Resort (5A)
- South Hill Bamboo Sea (5A)
- Universal Animation Joyland (4A)
- Spring and Autumn Yancheng (4A)
- Maoshan Tour Resort (4A)
- Oriental SaltLake Resort



- 11家三级医院，38家民营医院
- 已有8家医疗机构开设有接待外籍人士的绿色通道，并能提供英语服务
- 11 Triple-A hospitals, 38 private hospitals
- 8 Hospitals are able to provide English service and have set up "English channels" for foreigners

- 常州社会稳定，治安良好
- 曾获全国社会治安综合治理优秀地市、全国文明城市称号
- Stable society and safe
- Honored with the title of national good public security and civilized city

- 星级酒店56家，其中五星级酒店9家（例如：香格里拉、喜来登等），四星级酒店21家
- 56 hotels, 9 five-star hotels (Such as Shangri-la, Sheraton, etc.) and 21 four-star hotels

- 1988年成立外商投资企业协会
- 组织各类文体活动，例如外资企业沙龙、各类体育比赛等
- The association of FIEs was founded in 1988
- A variety of cultural and sport activities have been organized such as FIEs salon, sports activities etc.

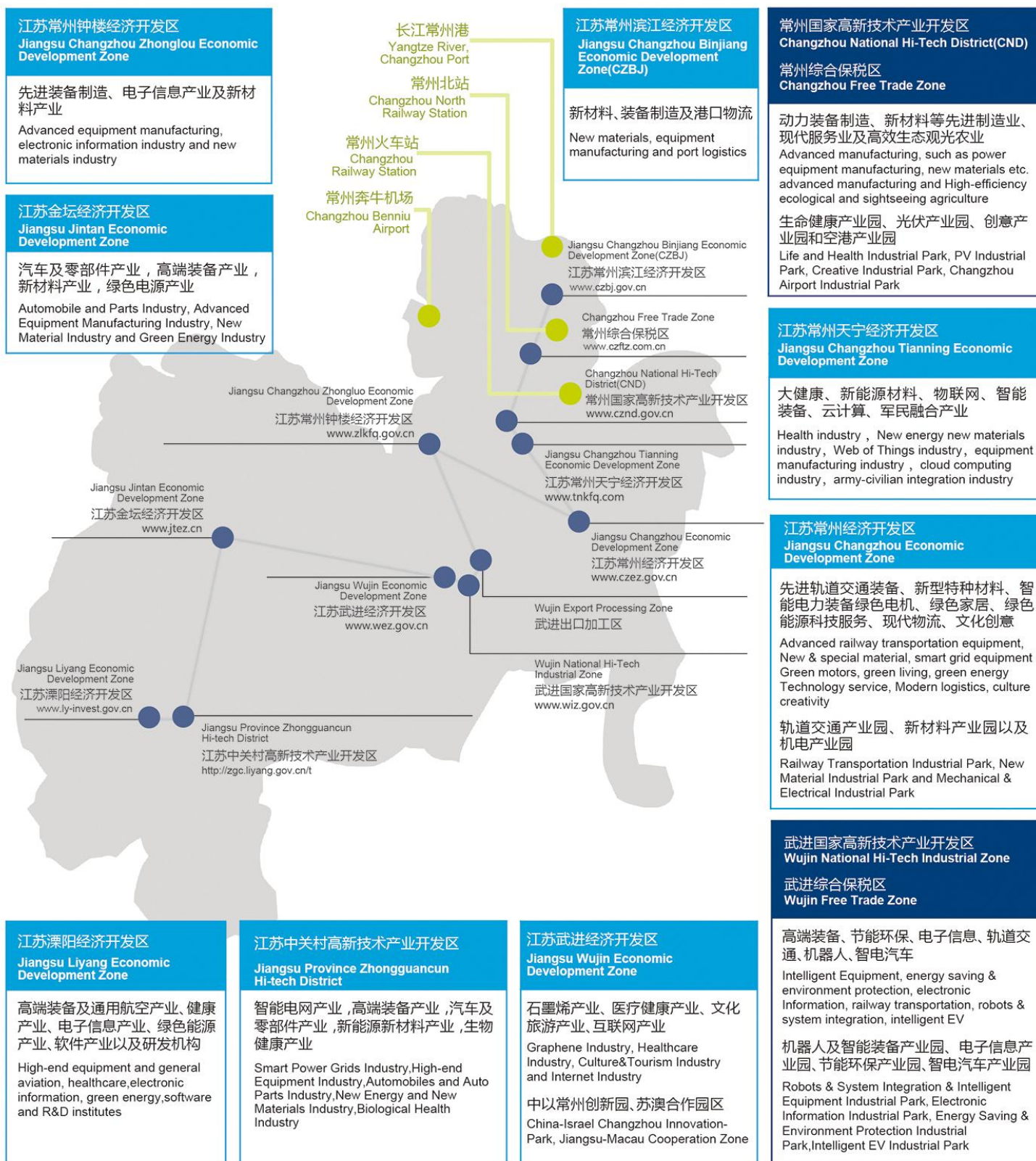


投资平台

常州省级以上开发区和综合保税区

Investment Platforms

Provincial & state level development zones and free trade zones in Changzhou



目前已有61家世界500强企业投资常州

61 Fortune 500 Enterprises invested in Changzhou



联系方式

Contacts

常州市国际投资促进中心

常州市国际投资促进中心成立于 2006 年，为来常州投资合作的客商提供全方位专业服务。

电邮: contact@ciip.gov.cn

传真: +86 (519) 8812 3099

网址: www.ciip.gov.cn

Changzhou International Investment Promotion Center

Changzhou International Investment Promotion Center was founded in 2006, which provides all-around professional services for overseas investors in Changzhou.

Email: contact@ciip.gov.cn

Fax: +86 (519) 8812 3099

Website: www.ciip.gov.cn

常州市驻上海经贸联络处

地址: 上海市南京西路 1376 号上海商城东峰办公楼 663 室

电话: +86 (21) 5820 1545

Changzhou Economic Liaison Office Shanghai

Address: Suite 66s, East Offices, Shanghai Centre, 1376 Nanjing Road West, Shanghai

Tel: +86 (21) 5820 1545

常州市人民政府

网址: www.changzhou.gov.cn

Changzhou Municipal People's Government

Website: www.changzhou.gov.cn

常州市商务局

网址: swj.changzhou.gov.cn

Changzhou Municipal Bureau of Commerce

Website: swj.changzhou.gov.cn